



11 Knights Ridge, Orpington

£2,600 pcm

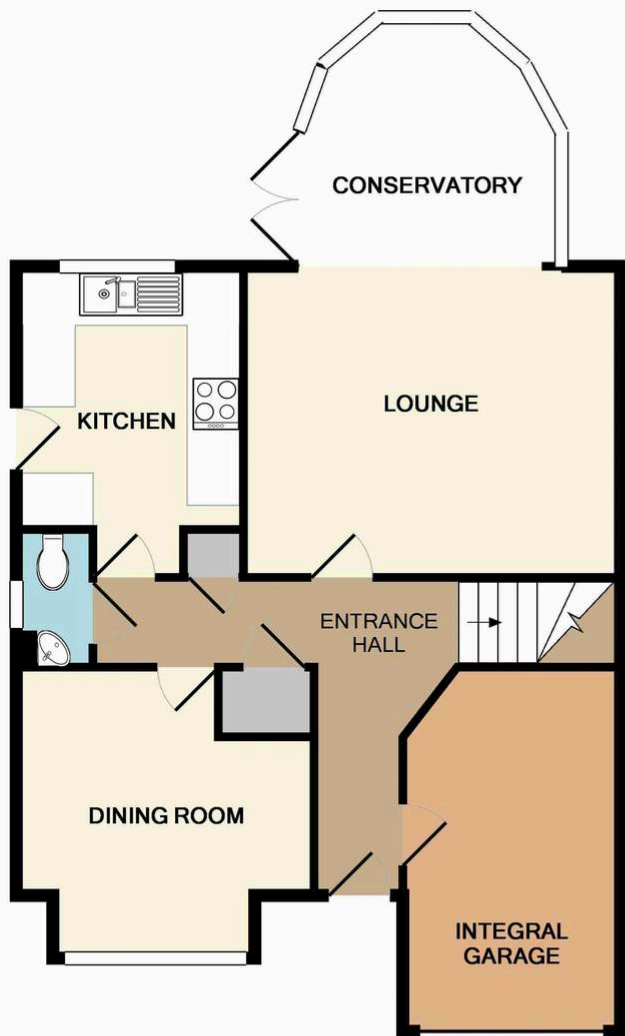
AVAILABLE IN AUGUST • FOUR BEDROOM DETACHED FAMILY HOUSE • WITHIN WALKING DISTANCE OF CHELSFIELD STATION
• PRIVATE GARDEN • OFF STREET PARKING

Holding Fee: £600.00

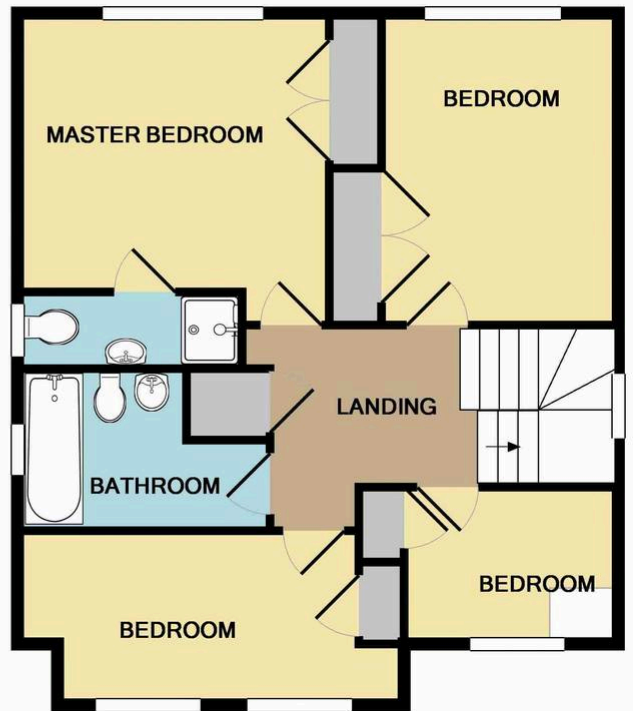
Security Deposit: £3000.00

Earnings Required: £78,000





GROUND FLOOR
APPROX. FLOOR
AREA 681 SQ.FT.
(63.2 SQ.M.)



1ST FLOOR
APPROX. FLOOR
AREA 568 SQ.FT.
(52.7 SQ.M.)

TOTAL APPROX. FLOOR AREA 1248 SQ.FT. (116.0 SQ.M.)

Whilst every attempt has been made to ensure the accuracy of the floor plan contained here, measurements of doors, windows, rooms and any other items are approximate and no responsibility is taken for any error, omission, or mis-statement. This plan is for illustrative purposes only and should be used as such by any prospective purchaser. The services, systems and appliances shown have not been tested and no guarantee as to their operability or efficiency can be given
Made with Metropix ©2014

You can include any text here. The text can be modified upon generating your brochure.