

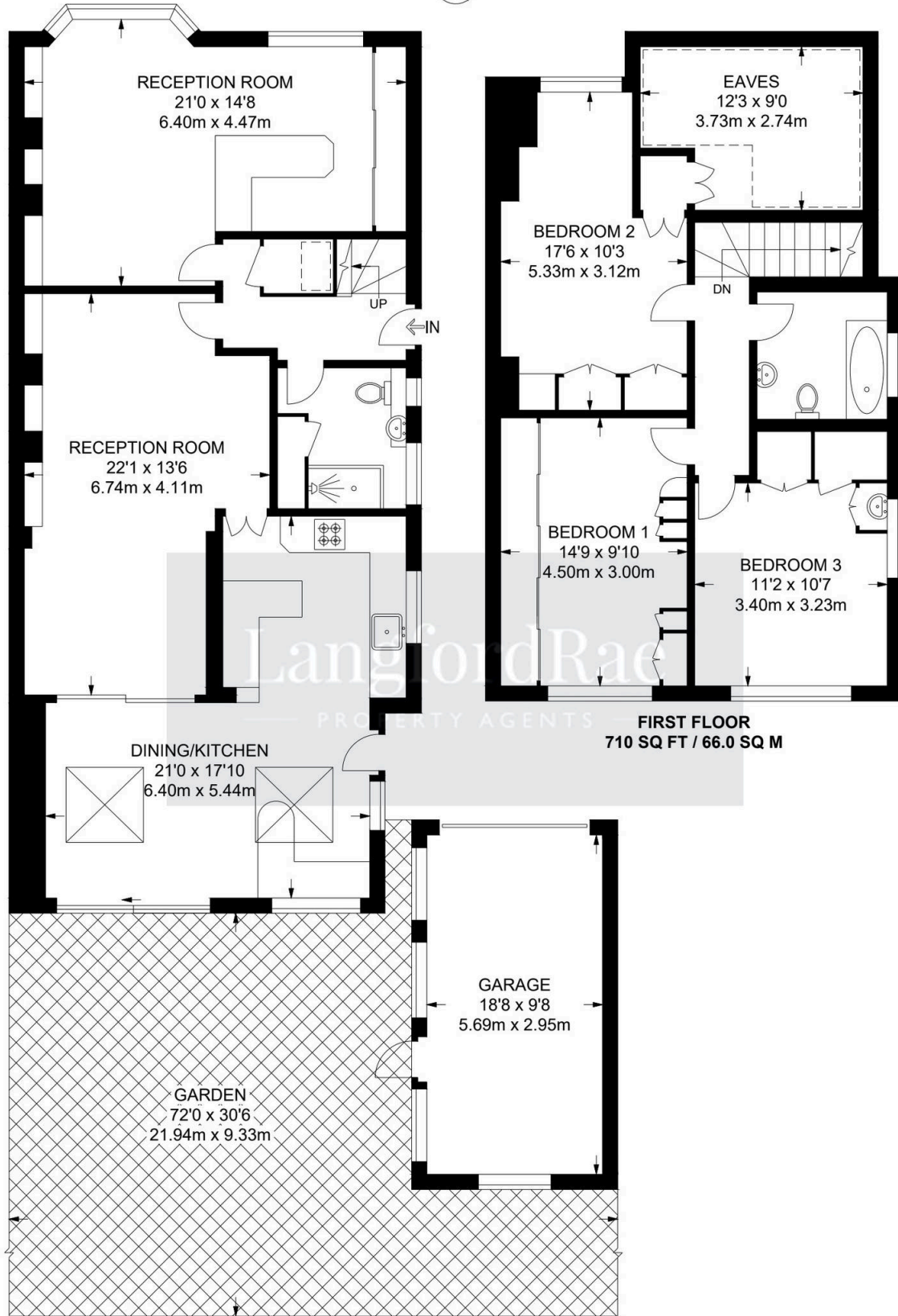


## 152 Repton Road, Orpington

£600,000 Freehold

CHAIN FREE • THREE DOUBLE BEDROOMS • 21FT KITCHEN/DINING • TWO RECEPTION ROOMS • EAVES STORAGE • 18FT GARAGE & DRIVEWAY • TWO BATHROOMS • SECLUDED 72FT GARDEN • CLOSE TO MULTIPLE STATIONS • CLOSE TO LOCAL SCHOOLS & AMENITIES





**GROUND FLOOR**  
971 SQ FT / 90.2 SQ M

**FIRST FLOOR**  
710 SQ FT / 66.0 SQ M

**APPROXIMATE GROSS INTERNAL AREA: 1681 SQ FT / 156.2 SQ M**  
**TOTAL AREA (INCLUDING OUTBUILDING): 1861 SQ FT / 172.9 SQ M**

You can include any text here. The text can be modified upon generating your brochure.