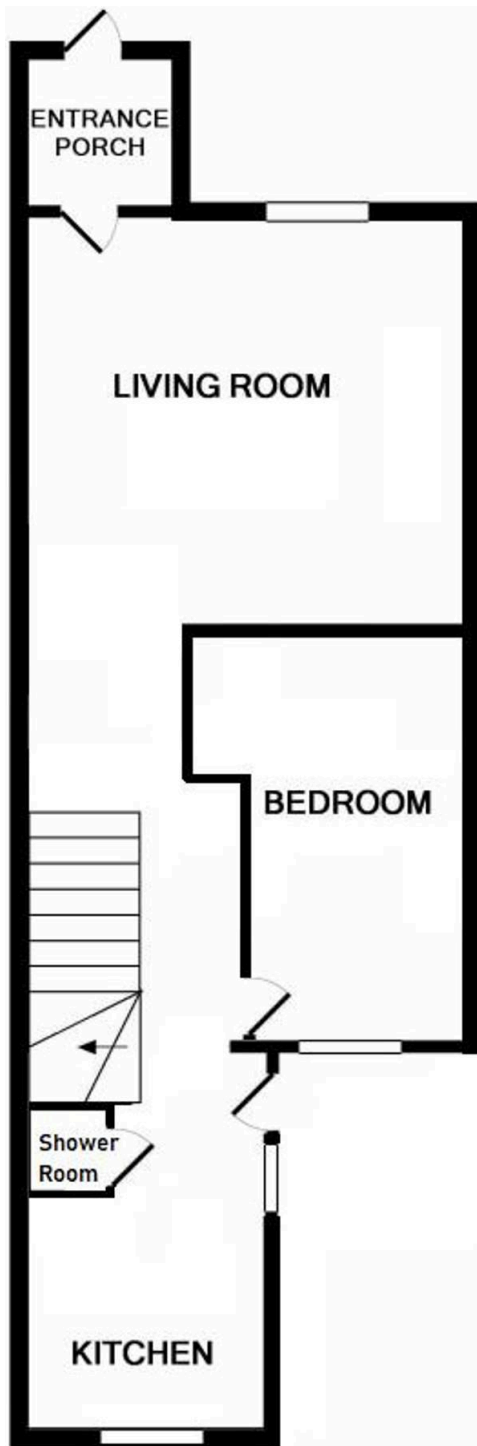


87 Worlds End Lane, Orpington

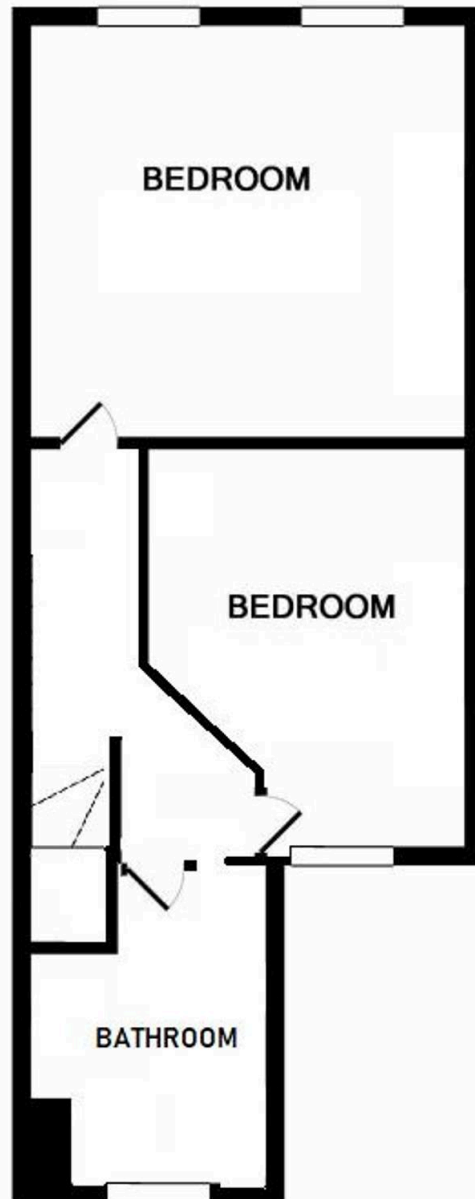
£1,950 pcm Freehold

AVAILABLE IMMEDIATELY • WALKING DISTANCE OF CHELSFIELD STATION • WALKING DISTANCE OF GREEN STREET GREEN HIGH STREET • CLOSE PROXIMITY TO GREEN STREET GREEN PRIMARY SCHOOL • ENCLOSED GARDEN WITH PATIO AREA • MODERN FITTED KITCHEN WITH INTEGRATED APPLIANCES • GAS CENTRAL HEATING & DOUBLE GLAZING THROUGHOUT





GROUND FLOOR
APPROX. FLOOR
AREA 336 SQ.FT.
(31.2 SQ.M.)



1ST FLOOR
APPROX. FLOOR
AREA 302 SQ.FT.
(28.1 SQ.M.)

**WORLDS END LANE, ORPINGTON
TOTAL APPROX. FLOOR AREA 638 SQ.FT. (59.3 SQ.M.)**

Whilst every attempt has been made to ensure the accuracy of the floor plan contained here, measurements of doors, windows, rooms and any other items are approximate and no responsibility is taken for any error, omission, or mis-statement. This plan is for illustrative purposes only and should be used as such by any prospective purchaser. The services, systems and appliances shown have not been tested and no guarantee as to their operability or efficiency can be given

Made with Metropix ©2019