

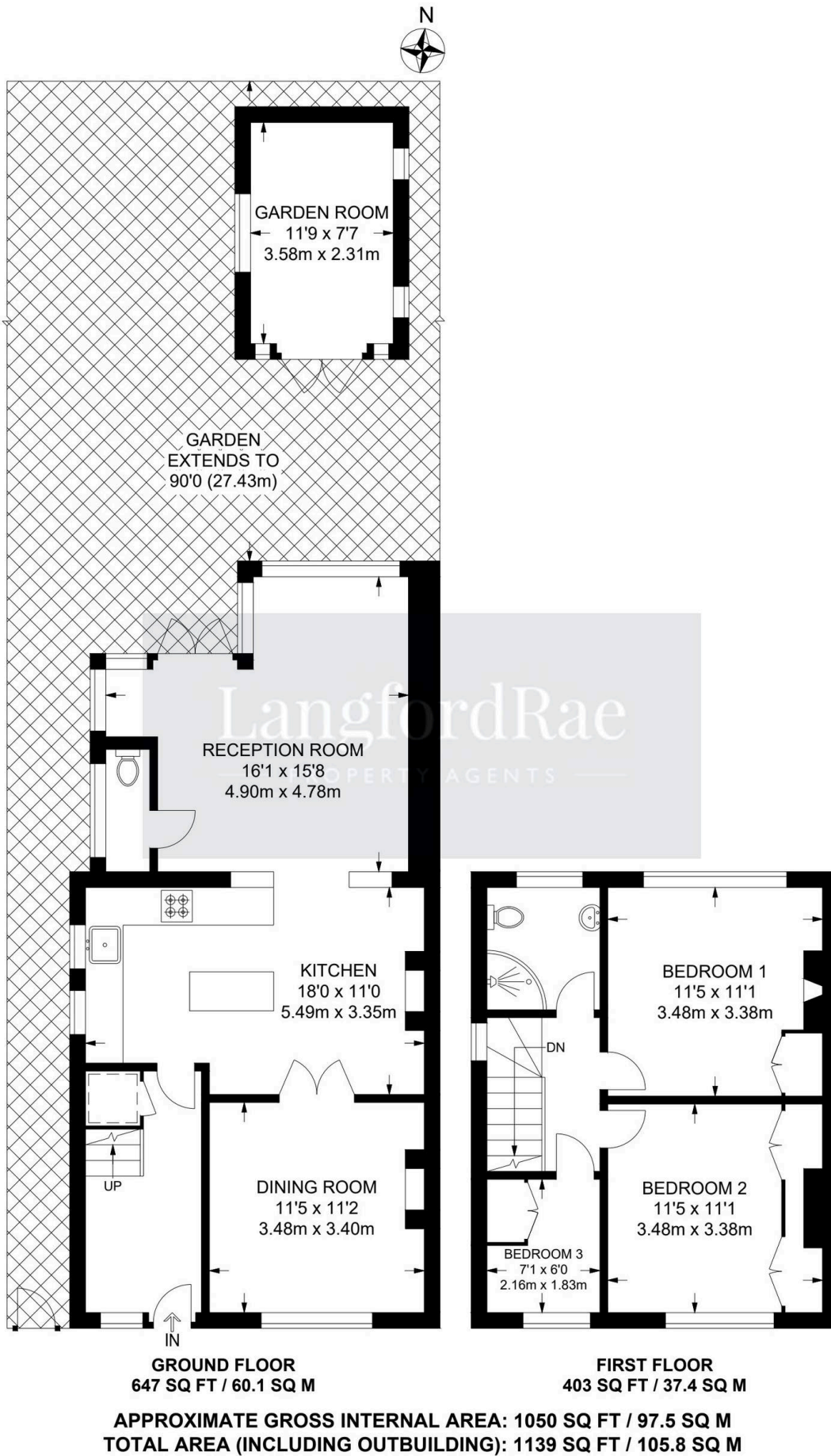


17 Lezayre Road, Orpington

£600,000 Freehold

OPEN PLAN FAMILY LIVING • PRIVATE DRIVEWAY • DINING ROOM • SUMMERHOUSE/GARDEN OFFICE • FAMILY SHOWER ROOM • CLOAKROOM • CLOSE TO CHELSFIELD AND ORPINGTON STATION & AMENITIES • SECLUDED REAR GARDEN • AMPLE STORAGE • DOUBLE GLAZING, EXTERNAL WALL INSULATION & GAS CENTRAL HEATING





You can include any text here. The text can be modified upon generating your brochure.