

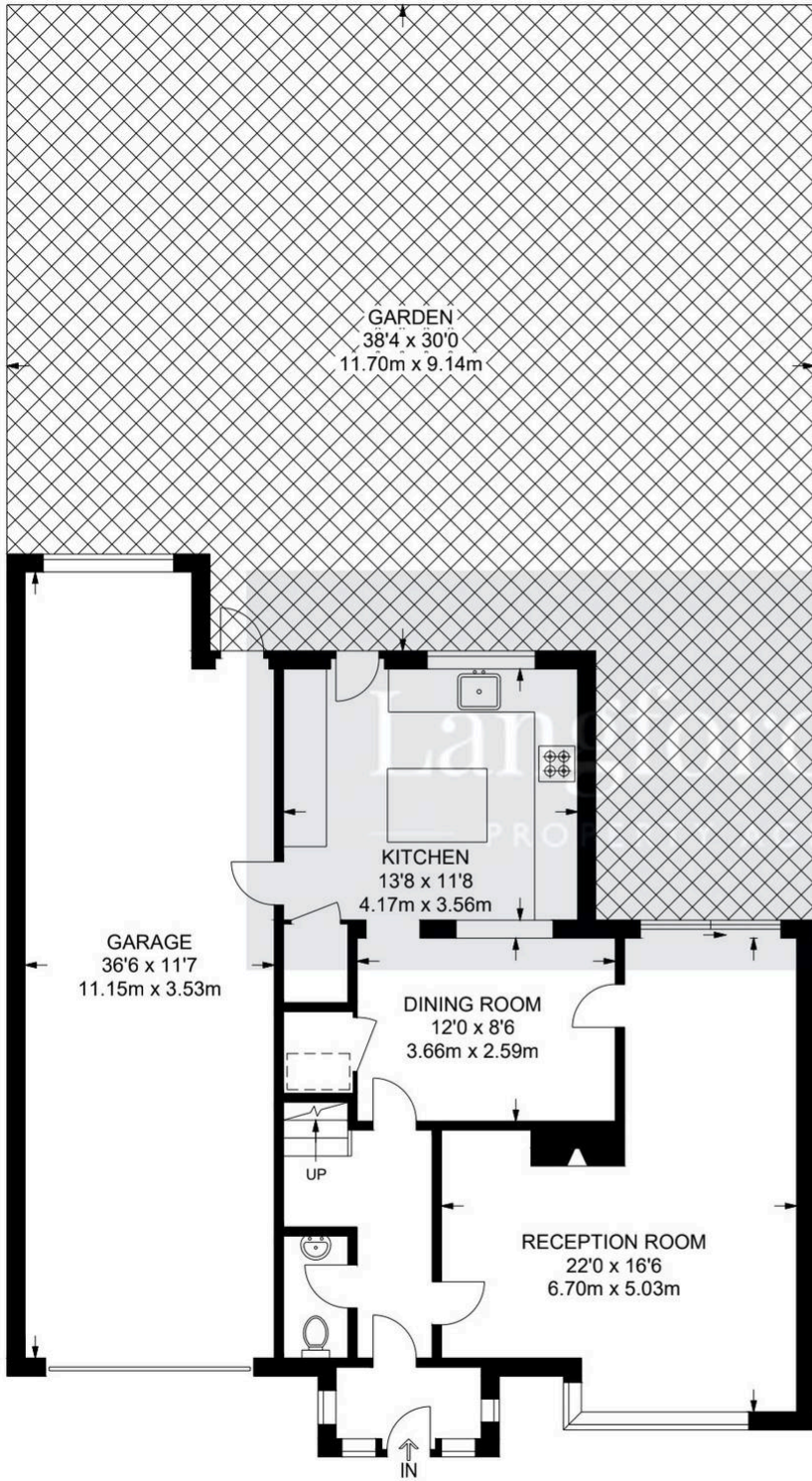


## 4 Crown Close, Orpington

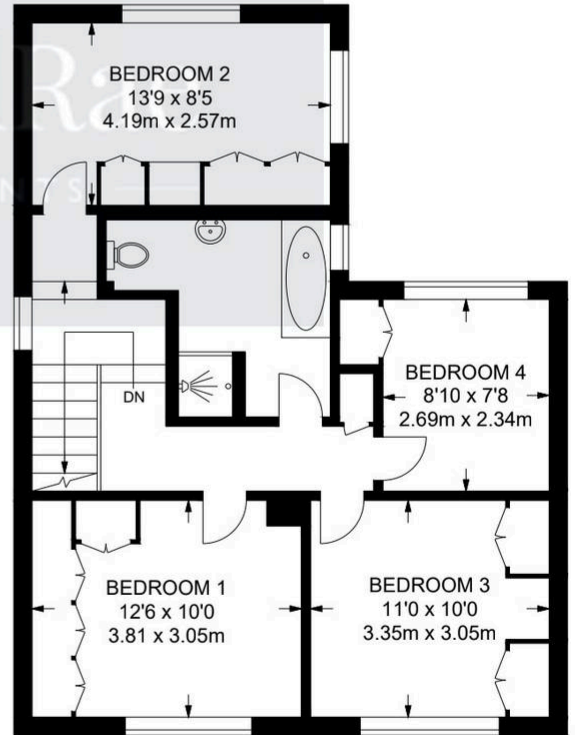
£725,000 Freehold

CHAIN FREE • TANDEM GARAGE • THREE DOUBLE BEDROOMS • KITCHEN/DINING • L SHAPED RECEPTION • CLOAKROOM • FAMILY BATHROOM • SECLUDED GARDEN • WALKING DISTANCE TO CHELSFIELD STATION • CLOSE TO LOCAL SCHOOLS & AMENITIES





**GROUND FLOOR**  
1105 SQ FT / 102.6 SQ M



**FIRST FLOOR**  
634 SQ FT / 58.9 SQ M

**APPROXIMATE GROSS INTERNAL AREA**  
1739 SQ FT / 161.5 SQ M

You can include any text here. The text can be modified upon generating your brochure.