



## 61 Bower Road, Hextable. BR8 7SF

£1,750 pcm Freehold

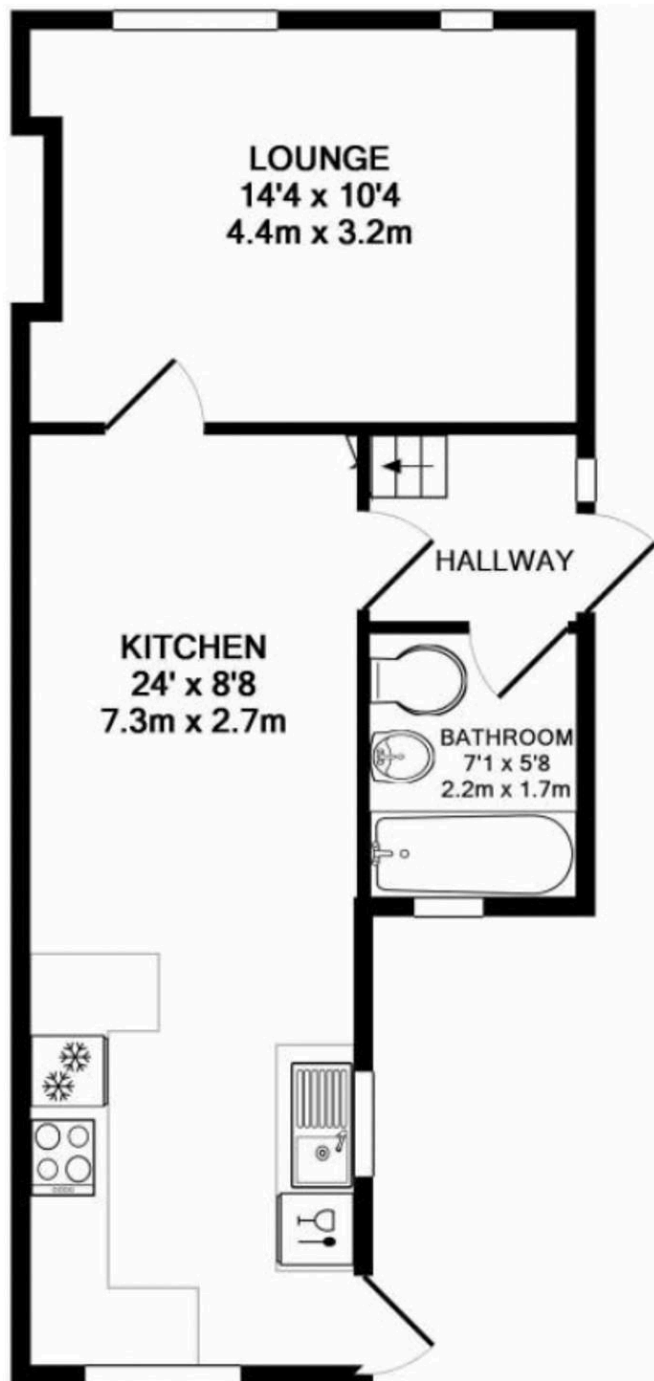
Available Immediately • Three Bedrooms • Semi-Detached House • Private Rear Garden • Garage

Holding deposit = £403.84

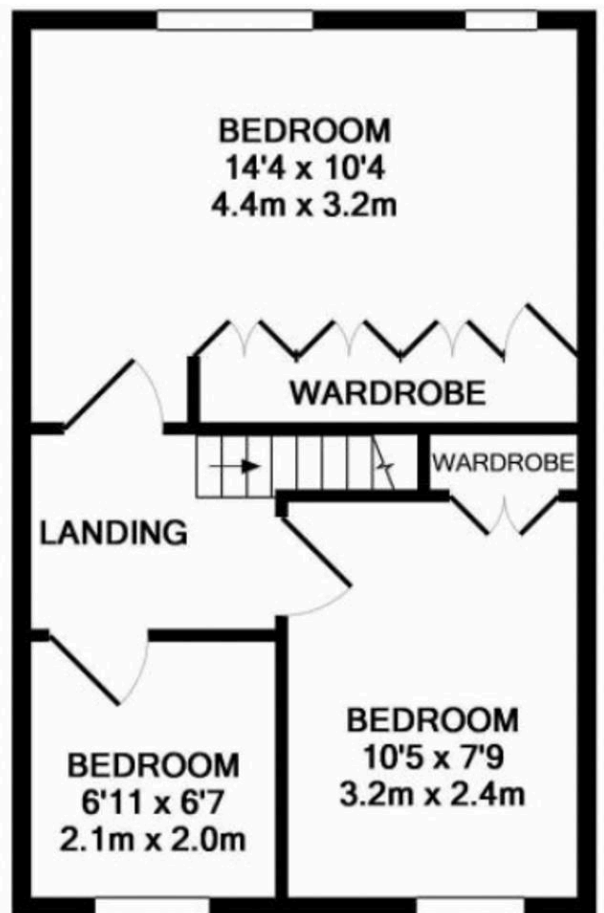
Security deposit = £ 2019.23

Minimum annual income = £52,500





**GROUND FLOOR**  
APPROX. FLOOR  
AREA 422 SQ.FT.  
(39.2 SQ.M.)



**1ST FLOOR**  
APPROX. FLOOR  
AREA 323 SQ.FT.  
(30.0 SQ.M.)

**TOTAL APPROX. FLOOR AREA 745 SQ.FT. (69.2 SQ.M.)**

Whilst every attempt has been made to ensure the accuracy of the floor plan contained here, measurements of doors, windows, rooms and any other items are approximate and no responsibility is taken for any error, omission, or mis-statement. This plan is for illustrative purposes only and should be used as such by any prospective purchaser. The services, systems and appliances shown have not been tested and no guarantee as to their operability or efficiency can be given

Made with Metropix ©2018

You can include any text here. The text can be modified upon generating your brochure.