

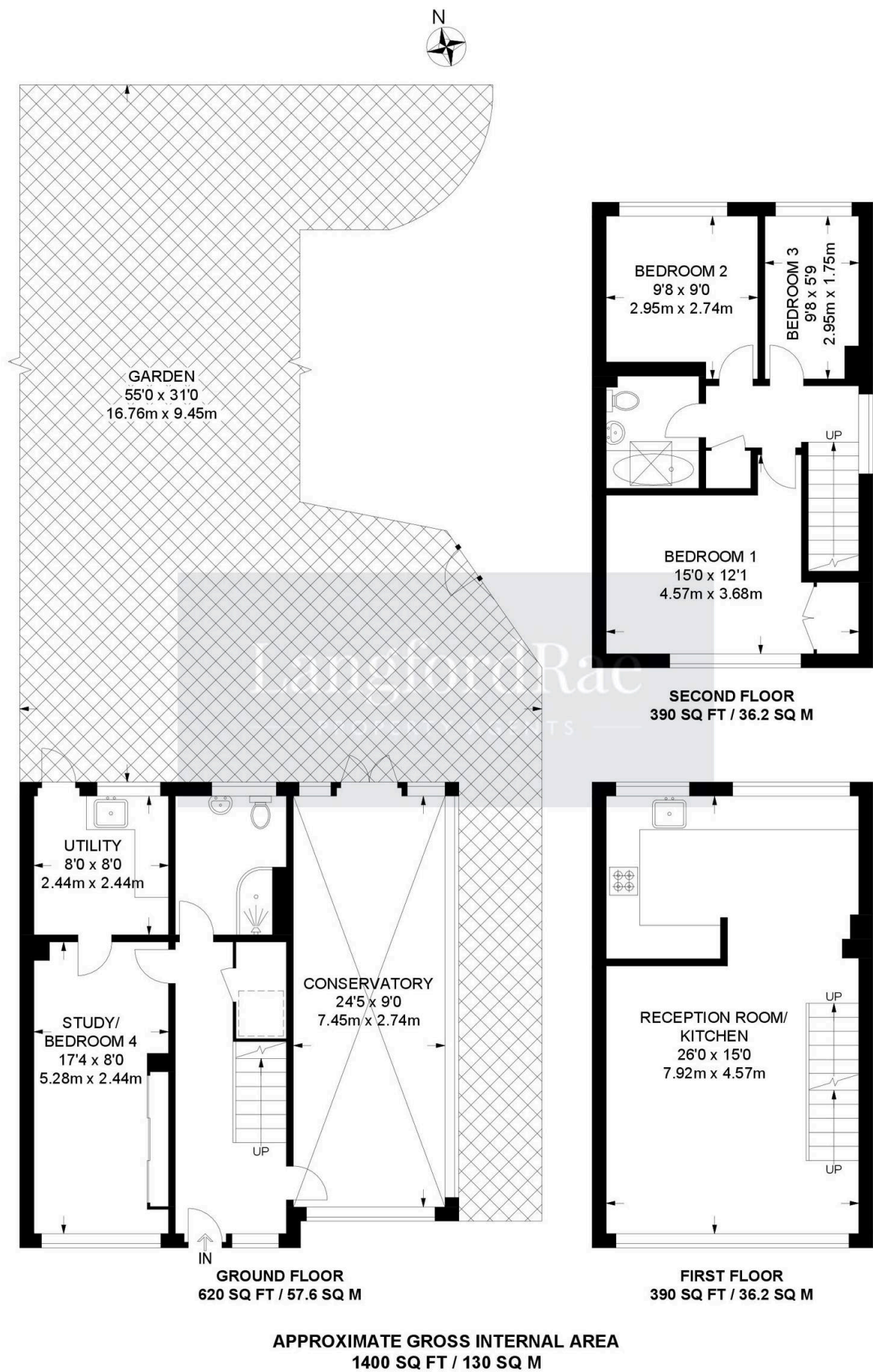


32 Highfield Avenue, Orpington

£535,000 Freehold

CLOSE TO CHELSFIELD STATION • CLOSE TO LOCAL SCHOOLS & AMENITIES • GROUND FLOOR GUEST BEDROOM • UTILITY & SHOWER ROOM • 24FT CONSERVATORY/RECEPTION • 26FT OPEN PLAN LIVING • FAMILY BATHROOM • SECLUDED REAR GARDEN • DRIVEWAY FOR ONE CAR • DOUBLE GLAZING & GAS CENTRAL HEATING





You can include any text here. The text can be modified upon generating your brochure.