

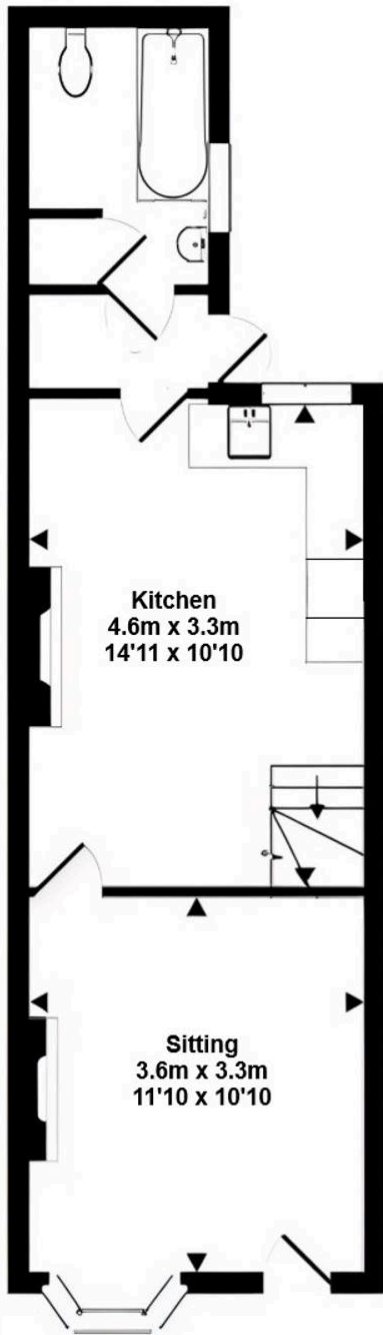


29 Crown Road, Shoreham

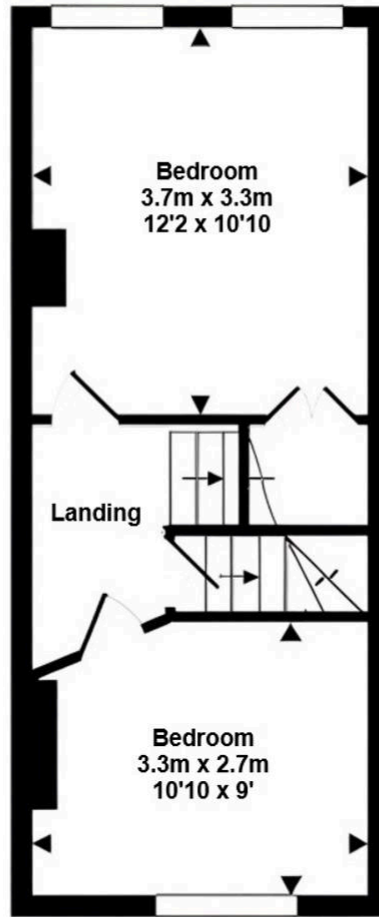
£575,000 Freehold

MID TERRACE PERIOD COTTAGE • THREE BEDROOMS • CHARACTER FEATURES THROUGHOUT • HORIZON BLUE- SHAKER
STYLE KITCHEN • LOCATED IN THE DESIRABLE LOCATION OF SHOREHAM • FAMILY BATHROOM WITH ROLLTOP BATH •
LESS THAN A MILE TO SHOREHAM STATION • PLANTATION SHUTTERS

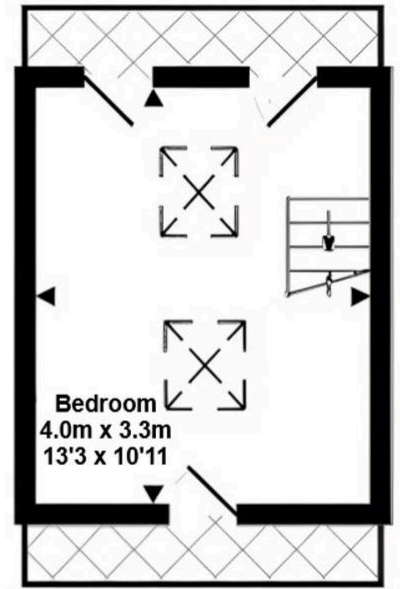




GROUND FLOOR



1ST FLOOR



2ND FLOOR



TOTAL APPROX. FLOOR AREA 73.4 SQ M (790 SQ. FT)

Please note that measurements are approximate and may not be to scale. This plan is for illustrative purposes only and not part of a contract.

You can include any text here. The text can be modified upon generating your brochure.