



## 6 Vine Road, Orpington

£650,000 Freehold

WALKING DISTANCE TO CHELSFIELD STATION • CLOSE TO LOCAL SCHOOLS & AMENITIES • DRIVEWAY FOR TWO CARS •  
 OPEN PLAN FAMILY LIVING • UTILITY & CLOAKROOM • SEPARATE RECEPTION ROOM • 14FT LOFT ROOM • FAMILY BATHROOM  
 • 96FT SECLUDED REAR GARDEN • THREE DOUBLE BEDROOMS

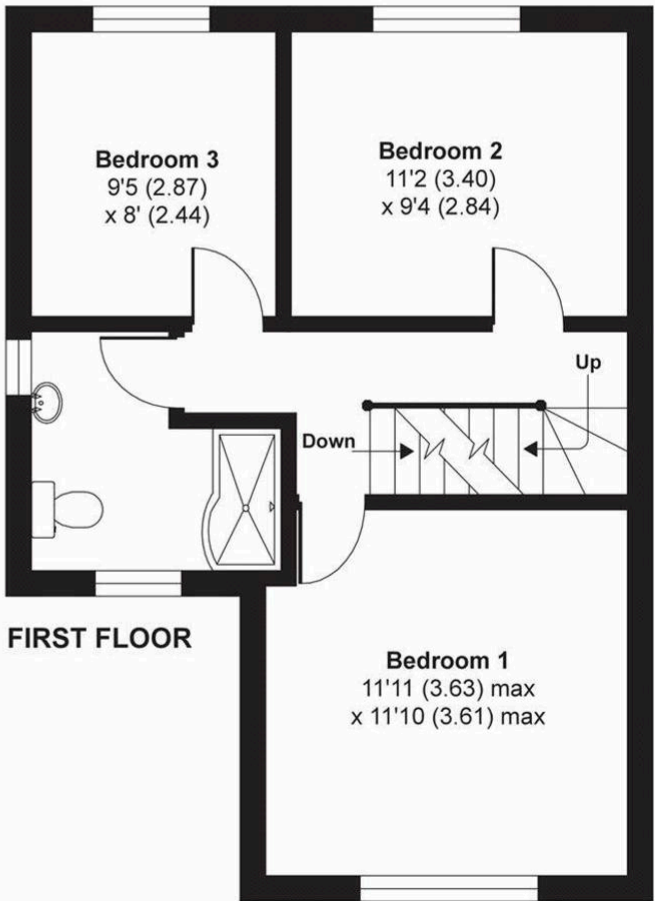
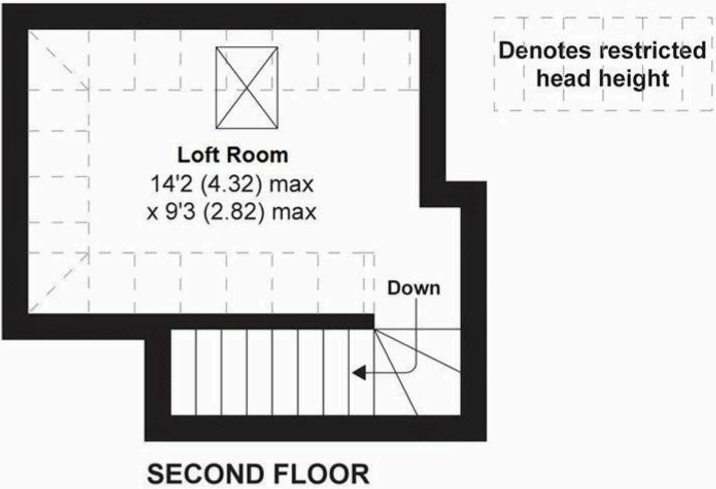
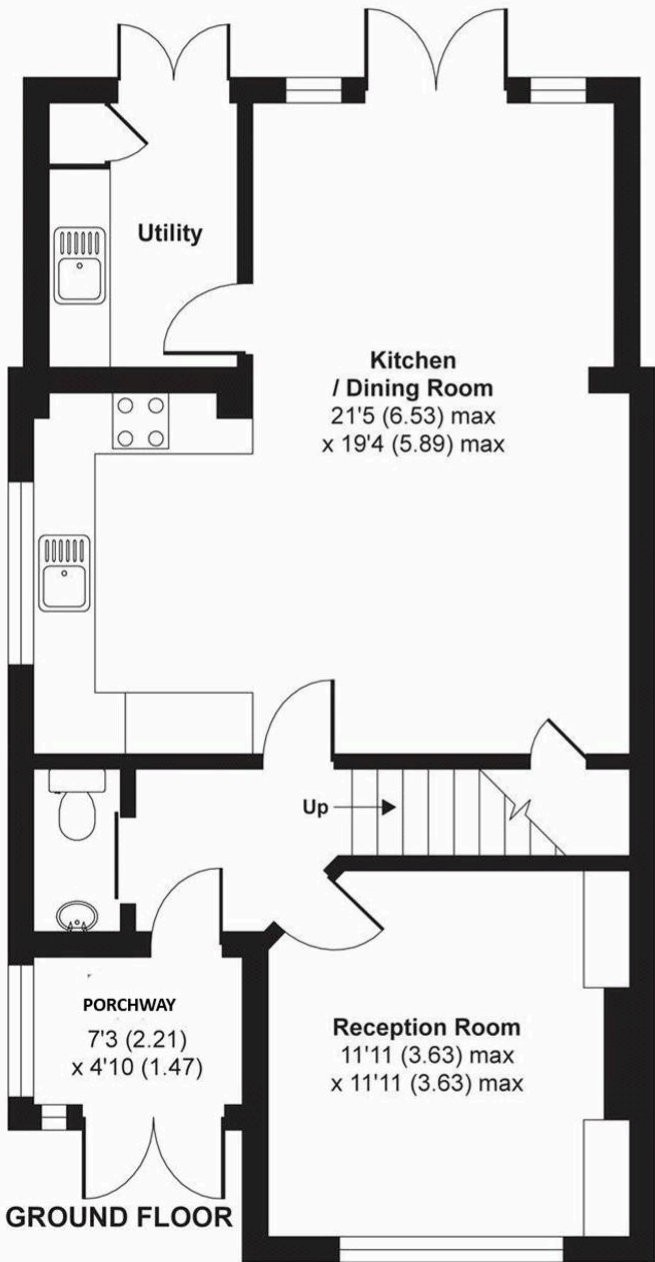
**VENDORS ARE HOPING TO BUY THEHOMESTEAD, SKEET HILL.**







**Garden**  
**Approximate**  
96'1 (244) max  
x 20'11 (6.38) max



Whilst every attempt has been made to ensure the accuracy of the floor plan contained here, measurements of doors, windows and rooms are approximate and no responsibility is taken for any error, omission or misstatement. These plans are for representation purposes only as defined by RICS Code of Measuring Practice and should be used as such by any prospective purchaser. Specifically no guarantee is given on the total square footage of the property if quoted on this plan. Any figure given is for initial guidance only and should not be relied on as a basis of valuation.