

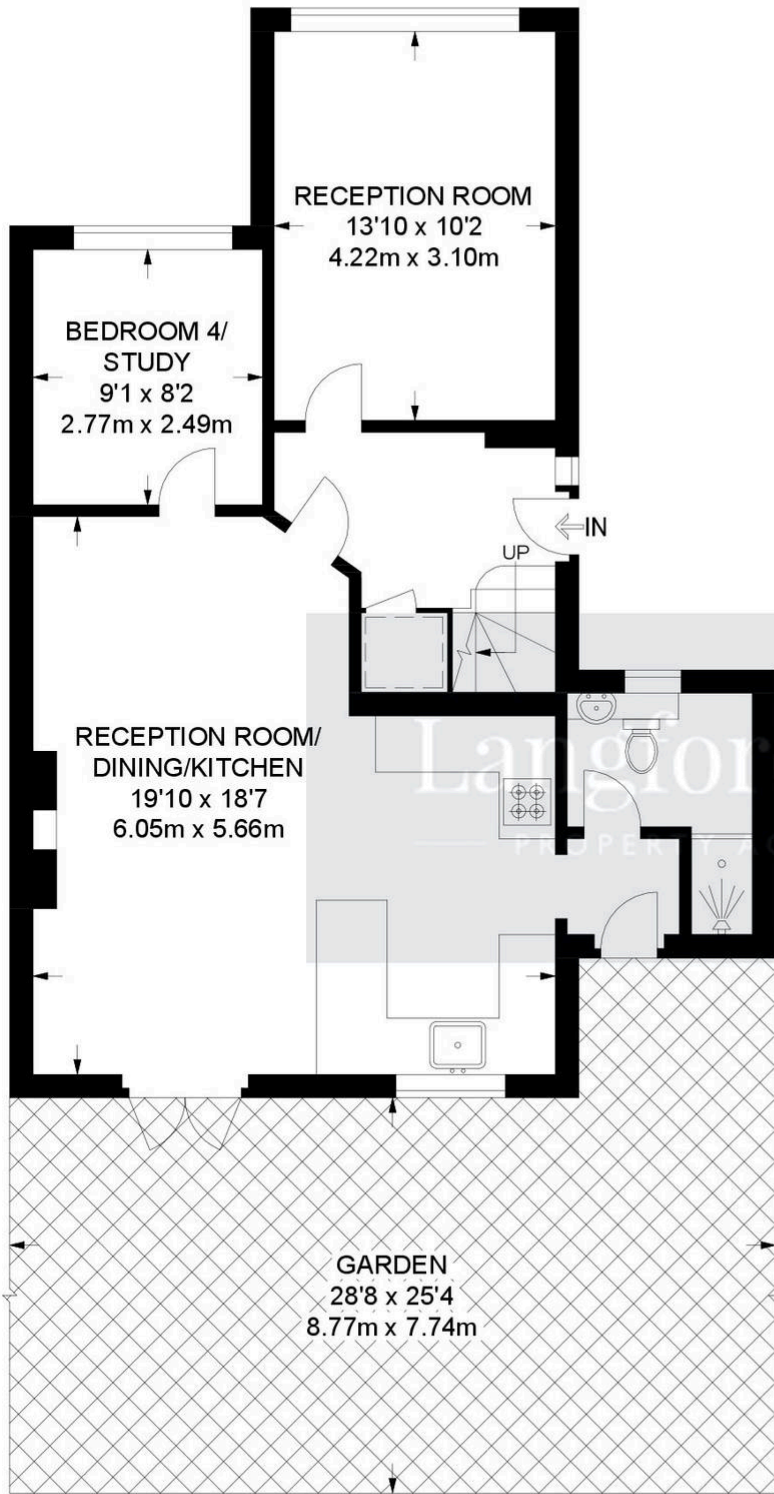
45 Glentrammon Avenue, Orpington

£575,000 Freehold

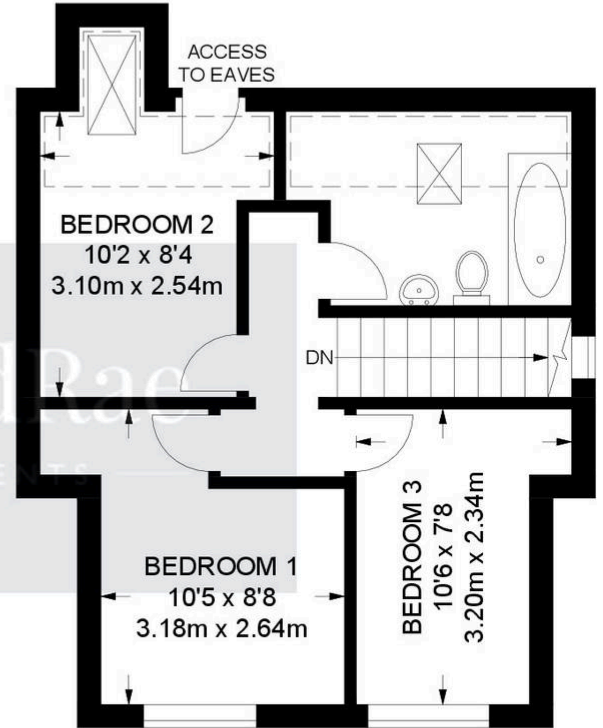
OPEN PLAN KITCHEN/DINER • SEPARATE LOUNGE • STUDY / BEDROOM 4 • GROUND FLOOR SHOWER ROOM • FAMILY BATHROOM • DOUBLE GLAZING & GAS CENTRAL HEATING • DRIVEWAY FOR THREE CARS • SECLUDED REAR GARDEN • CLOSE TO CHELSFIELD STATION & AMENITIES

WE NEED TO EXPLAIN THE FOURTH BEDROOM IS OFF THE LOUNGE





GROUND FLOOR
685 SQ FT / 63.6 SQ M



FIRST FLOOR
376 SQ FT / 34.9 SQ M

APPROXIMATE GROSS INTERNAL AREA
1061 SQ FT / 98.5 SQ M