

37 Stowe Road, Orpington

£570,000 Freehold

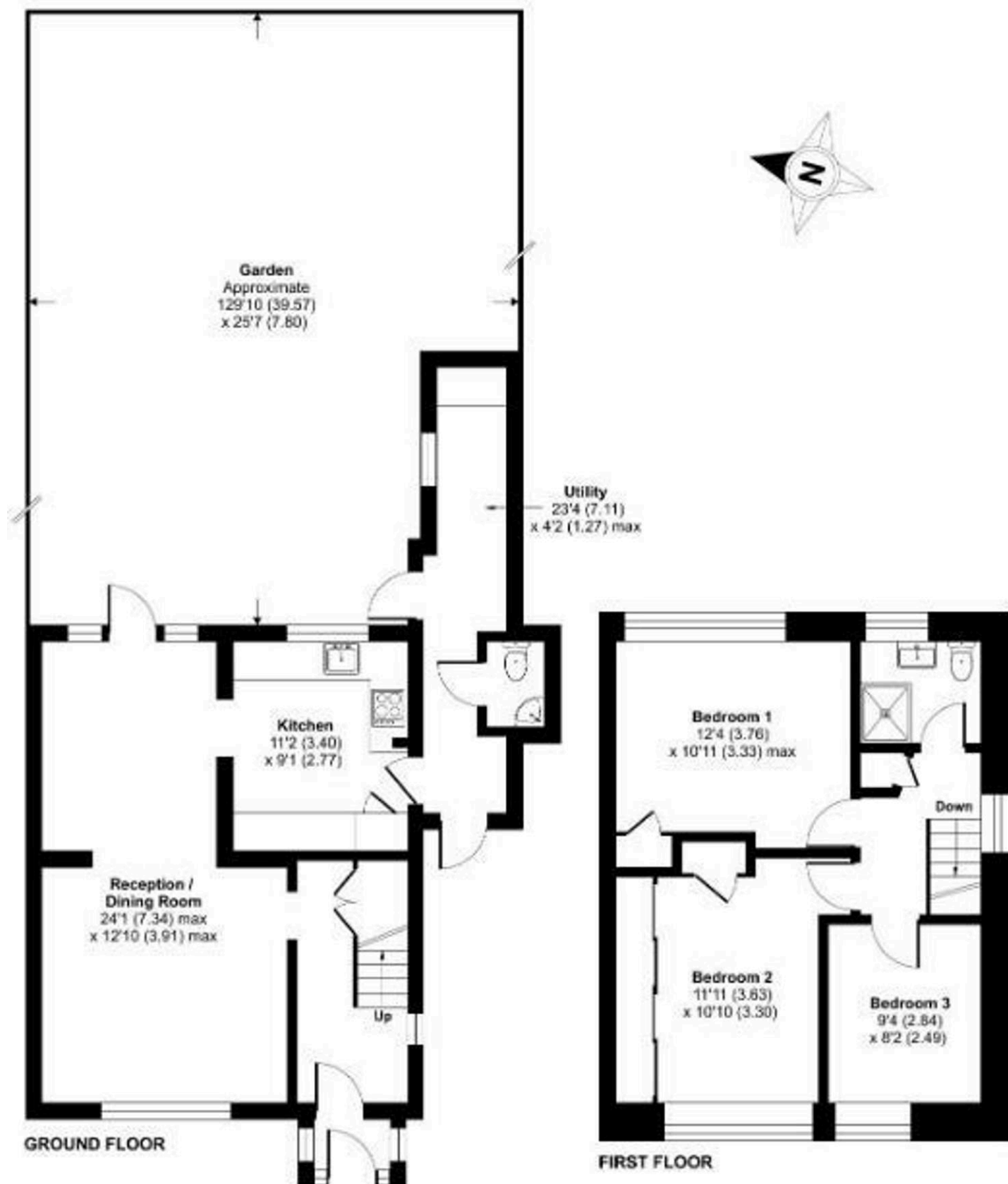
24FT RECEPTION ROOM • 129FT SECLUDED GARDEN • CLOAKROOM • CONTEMPORARY SHOWER ROOM • FITTED KITCHEN • UTILITY • DOUBLE GLAZING • GAS CENTRAL HEATING • CLOSE TO THE HIGHWAY PRIMARY SCHOOL • CLOSE TO MULTIPLE STATIONS



Stowe Road, Orpington, BR6

Approximate Area = 1075 sq ft / 99.8 sq m

For identification only - Not to scale



You can include any text here. The text can be modified upon generating your brochure.