



18 Ash Road, ORPINGTON

£1,950 pcm

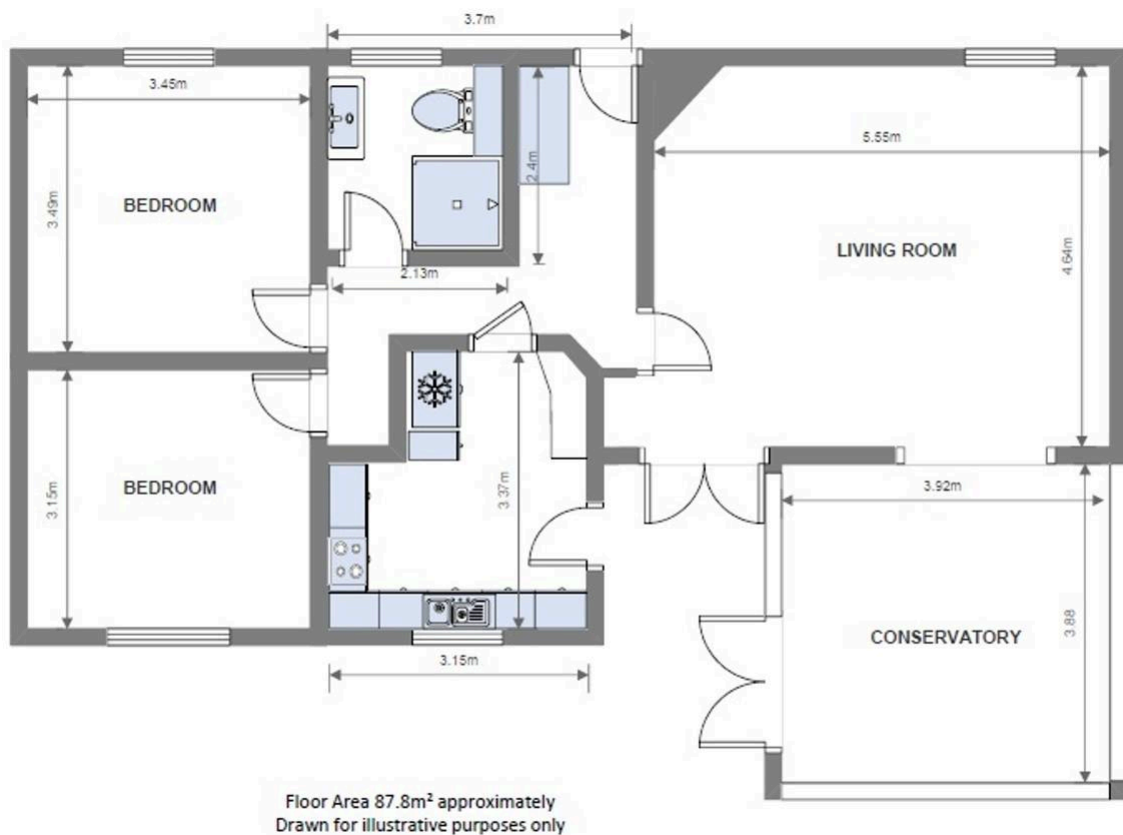
AVAILABLE IN JUNE • 2 BEDROOM DETACHED BUNGALOW • SEMI RURAL SETTING • WALKING DISTANCE TO GREEN STREET
GREEN SCHOOL • PRIVATE REAR PATIO AND LAWN AREA

Deposit - £2250.00 Holding Fee - £450.00

Income required - £59k per annum

Currently tenanted





You can include any text here. The text can be modified upon generating your brochure.