

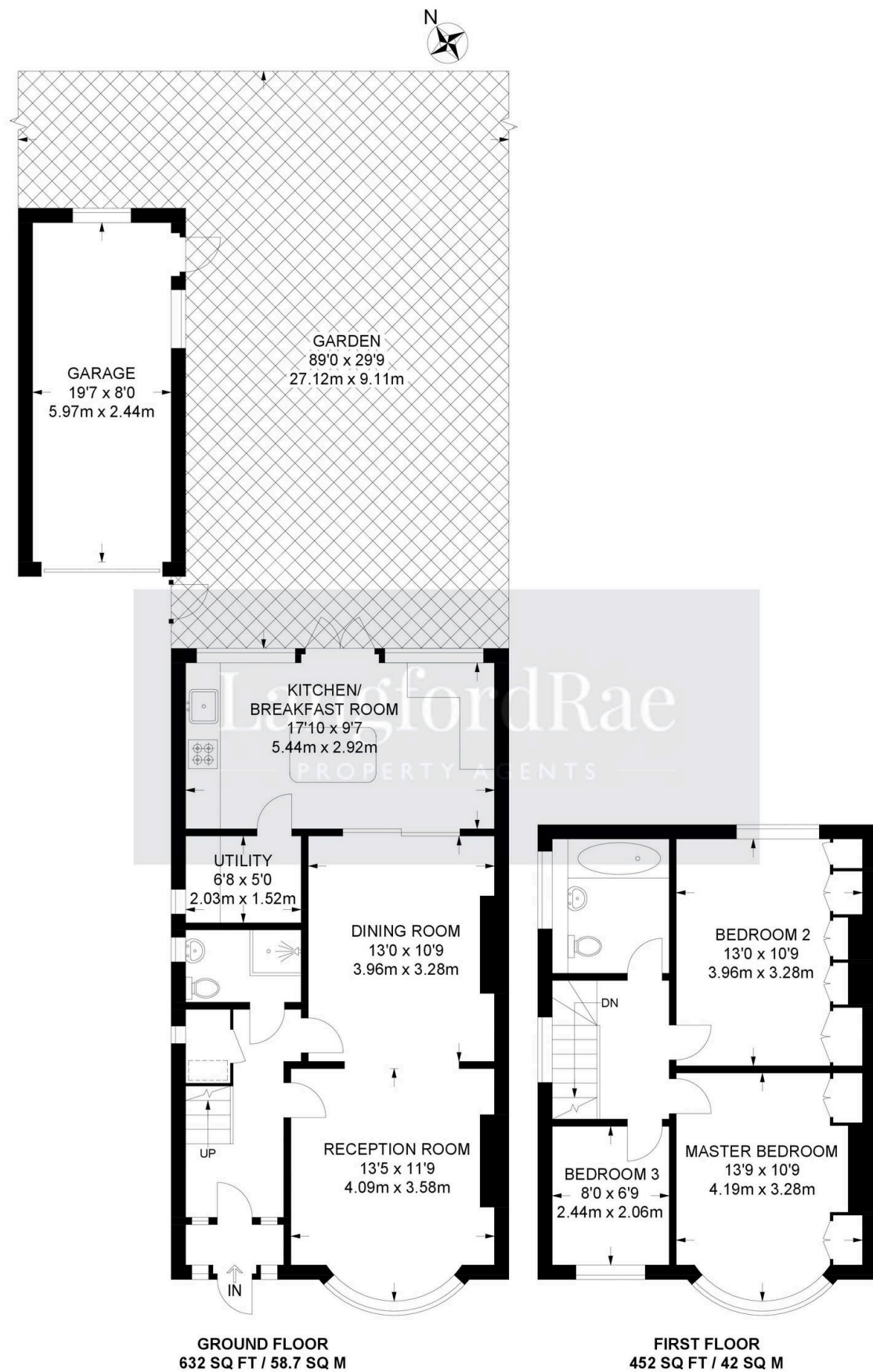


47 Repton Road, Orpington

£735,000 Freehold

CLOSE TO ORPINGTON STATION • SPACIOUS DRIVEWAY AND DETACHED GARAGE • 89FT SECLUDED REAR GARDEN • KITCHEN/BREAKFAST • GROUND FLOOR SHOWER ROOM • UTILITY • FAMILY BATHROOM • THROUGH LOUNGE/DINER • CLOSE TO LOCAL SCHOOLS & AMENITIES • POTENTIAL TO EXTEND (STLP) • BROMLEY COUNCIL TAX BAND E AND EPC RATING E





APPROXIMATE GROSS INTERNAL AREA: 1084 SQ FT / 100.7 SQ M
TOTAL AREA (INCLUDING GARAGE): 1241 SQ FT / 115.3 SQ M

You can include any text here. The text can be modified upon generating your brochure.