

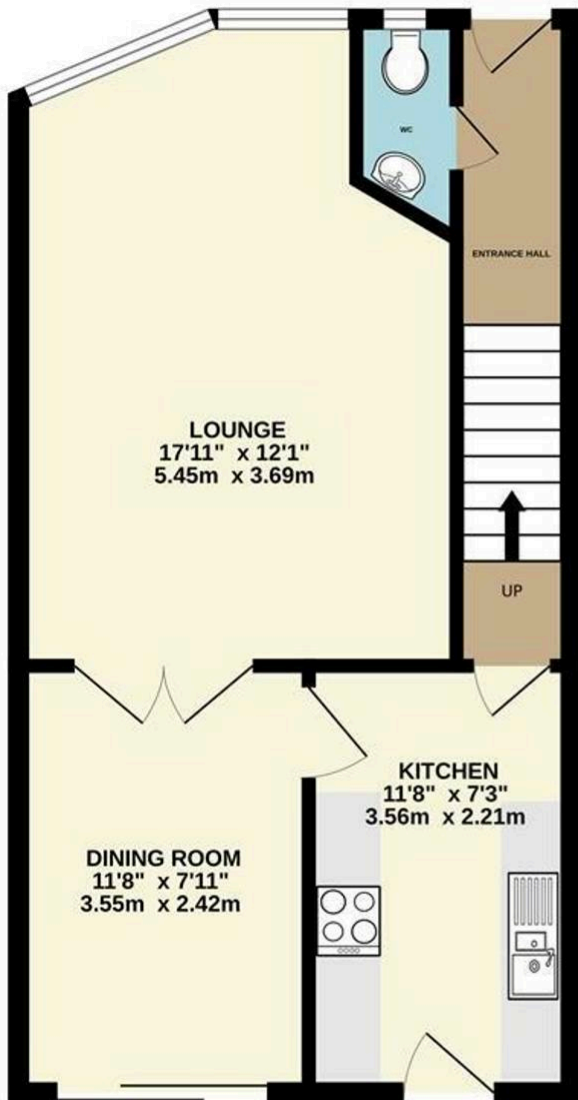
## 15 Foxwood Grove, Pratts Bottom

£425,000 Freehold

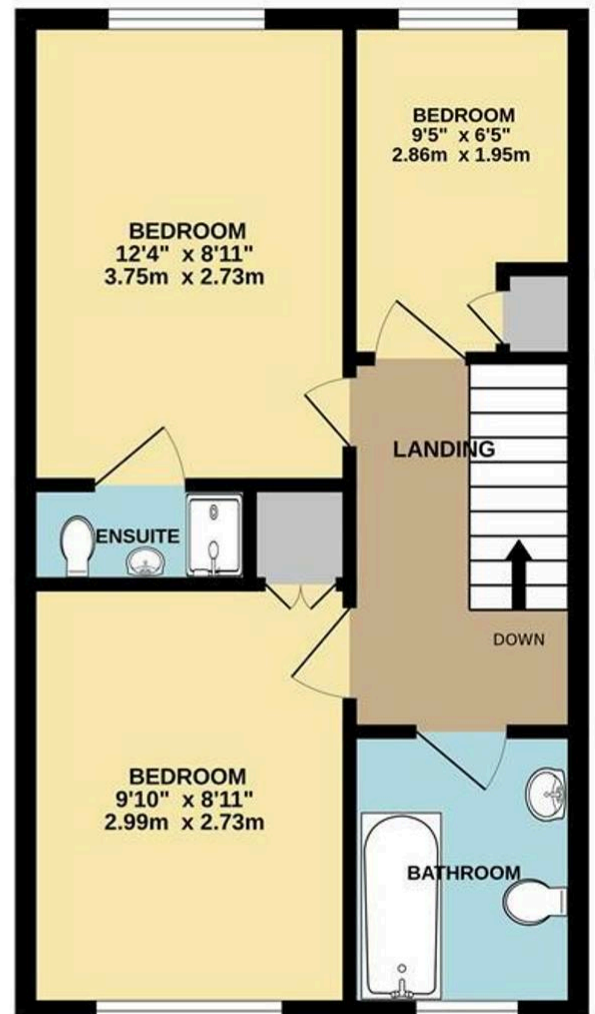
CHAIN FREE • GARAGE & OFF STREET PARKING • ENSUITE TO MASTER • CLOAKROOM & FAMILY BATHROOM • TWO  
RECEPTION ROOMS • SEPARATE KITCHEN • SOUTH WEST FACING GARDEN • DOUBLE GLAZED & GAS CENTRAL HEATING  
• VILLAGE LOCATION • CLOSE TO MULTIPLE STATIONS



GROUND FLOOR  
448 sq.ft. (41.6 sq.m.) approx.



1ST FLOOR  
419 sq.ft. (39.0 sq.m.) approx.



TOTAL FLOOR AREA : 867 sq.ft. (80.6 sq.m.) approx.

Whilst every attempt has been made to ensure the accuracy of the floorplan contained here, measurements of doors, windows, rooms and any other items are approximate and no responsibility is taken for any error, omission or mis-statement. This plan is for illustrative purposes only and should be used as such by any prospective purchaser. The services, systems and appliances shown have not been tested and no guarantee as to their operability or efficiency can be given.  
Made with Metropix ©2024

You can include any text here. The text can be modified upon generating your brochure.