

32 Julian Road, Orpington

£3,800 pcm

DETACHED SIX BEDROOM HOUSE • APPROX THIRD OF AN ACRE PLOT • GARAGE & DRIVEWAY FOR PARKING SEVERAL VEHICLES • THREE RECEPTION ROOMS • WALKING DISTANCE OF CHELSFIELD STATION • CLOSE TO LOCAL AMENITIES & SCHOOLS • BROMLEY COUNCIL TAX BAND F

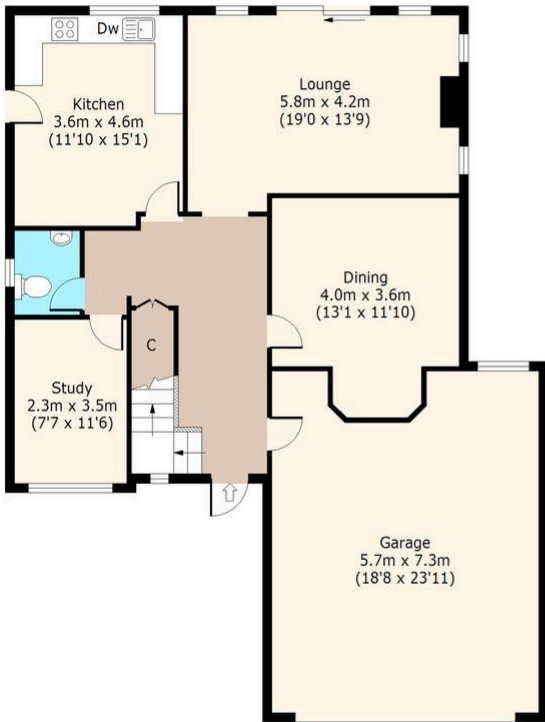
Deposit - £4384.62 Holding Fee - £876.92

Landlord doing viewings



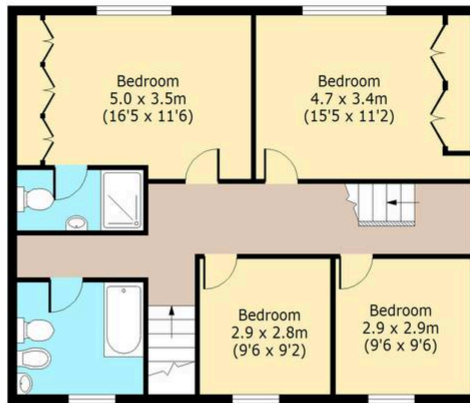
Ground Floor

Approx. 126.3 sq. meters
(1359 sq. feet)



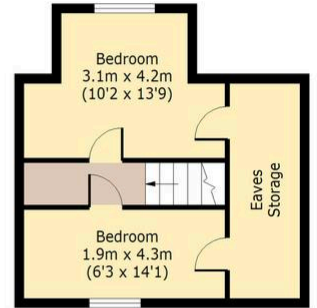
First Floor

Approx. 78.59 sq. meters
(846 sq. feet)



Second Floor

Approx. 31.1 sq. meters
(334 sq. feet)
(Including Eaves Storage)



Total area: approx. 235.87 sq. meters (2539 sq. feet)
For illustration purposes only - not to scale

You can include any text here. The text can be modified upon generating your brochure.