



## 5 Chestnut Close, Orpington

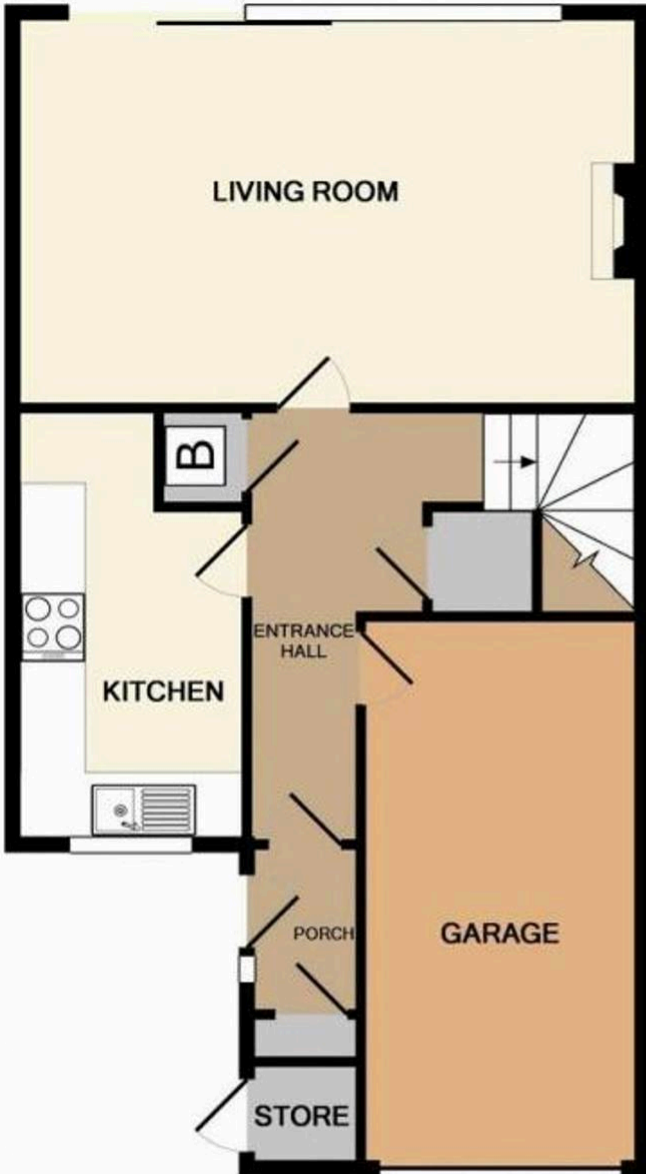
£1,800 pcm

3 BEDROOMS • GARAGE • OFF STREET PARKING • PRIVATE REAR GARDEN • SHOWER ROOM • FITTED KITCHEN

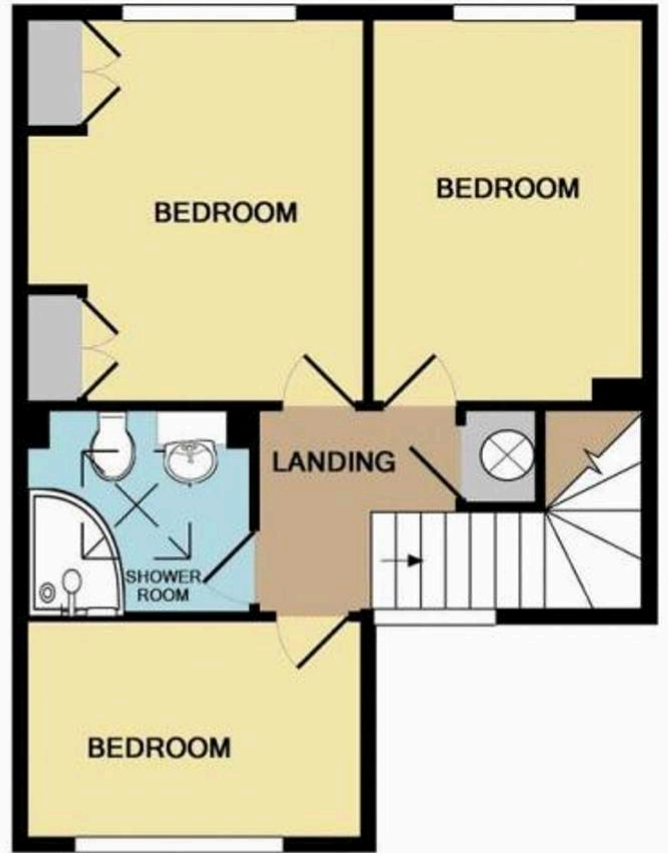
Deposit - £2076.92 Holding Fee - £415.38

Annual Income - £64,800





GROUND FLOOR  
APPROX. FLOOR  
AREA 607 SQ.FT.  
(56.4 SQ.M.)



1ST FLOOR  
APPROX. FLOOR  
AREA 425 SQ.FT.  
(39.5 SQ.M.)

TOTAL APPROX. FLOOR AREA 1032 SQ.FT. (95.9 SQ.M.)

Whilst every attempt has been made to ensure the accuracy of the floor plan contained here, measurements of doors, windows, rooms and any other items are approximate and no responsibility is taken for any error, omission, or mis-statement. This plan is for illustrative purposes only and should be used as such by any prospective purchaser. The services, systems and appliances shown have not been tested and no guarantee as to their operability or efficiency can be given

Made with Metropix ©2016

You can include any text here. The text can be modified upon generating your brochure.