



3 Vale Close, Orpington

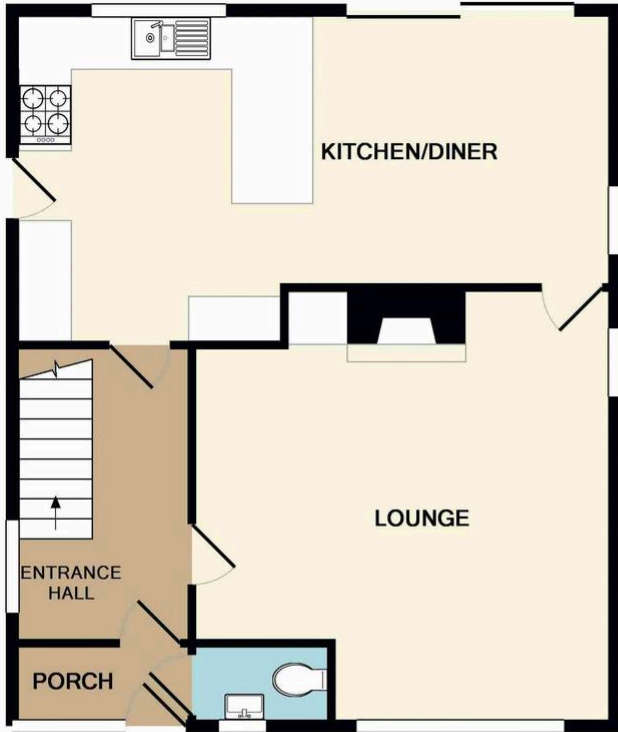
£2,400 pcm

AVAILABLE IMMEDIATELY • DETACHED THREE BEDROOM HOUSE • EN SUITE TO MASTER BEDROOM • FAMILY BATHROOM AND GROUND FLOOR WC • GAS CENTRAL HEATING & DOUBLE GLAZING • OFF STREET PARKING FOR MULTIPLE VEHICLES • DETACHED GARAGE & SUMMER HOUSE

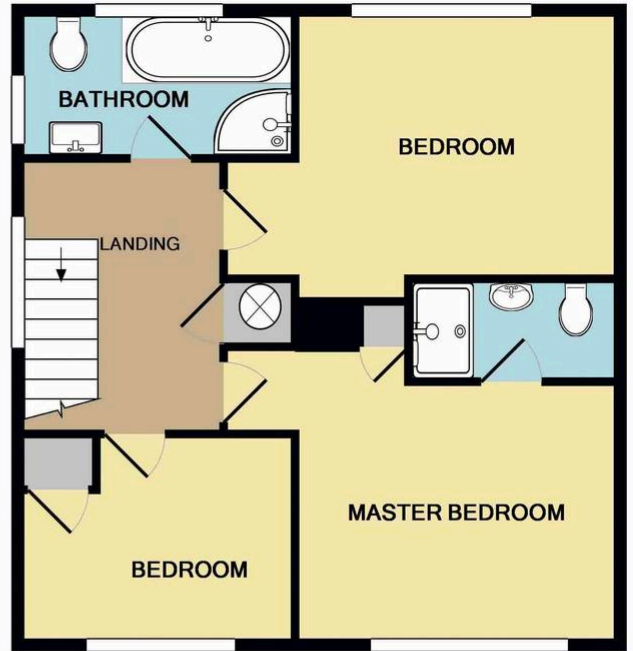
Annual Income - £72k

Deposit -£ 2769.23 Holding Fee - £553.84





GROUND FLOOR
APPROX. FLOOR
AREA 611 SQ.FT.
(56.7 SQ.M.)



1ST FLOOR
APPROX. FLOOR
AREA 537 SQ.FT.
(49.9 SQ.M.)

TOTAL APPROX. FLOOR AREA 1148 SQ.FT. (106.6 SQ.M.)

Whilst every attempt has been made to ensure the accuracy of the floor plan contained here, measurements of doors, windows, rooms and any other items are approximate and no responsibility is taken for any error, omission, or mis-statement. This plan is for illustrative purposes only and should be used as such by any prospective purchaser. The services, systems and appliances shown have not been tested and no guarantee as to their operability or efficiency can be given
Made with Metropix ©2017

You can include any text here. The text can be modified upon generating your brochure.