

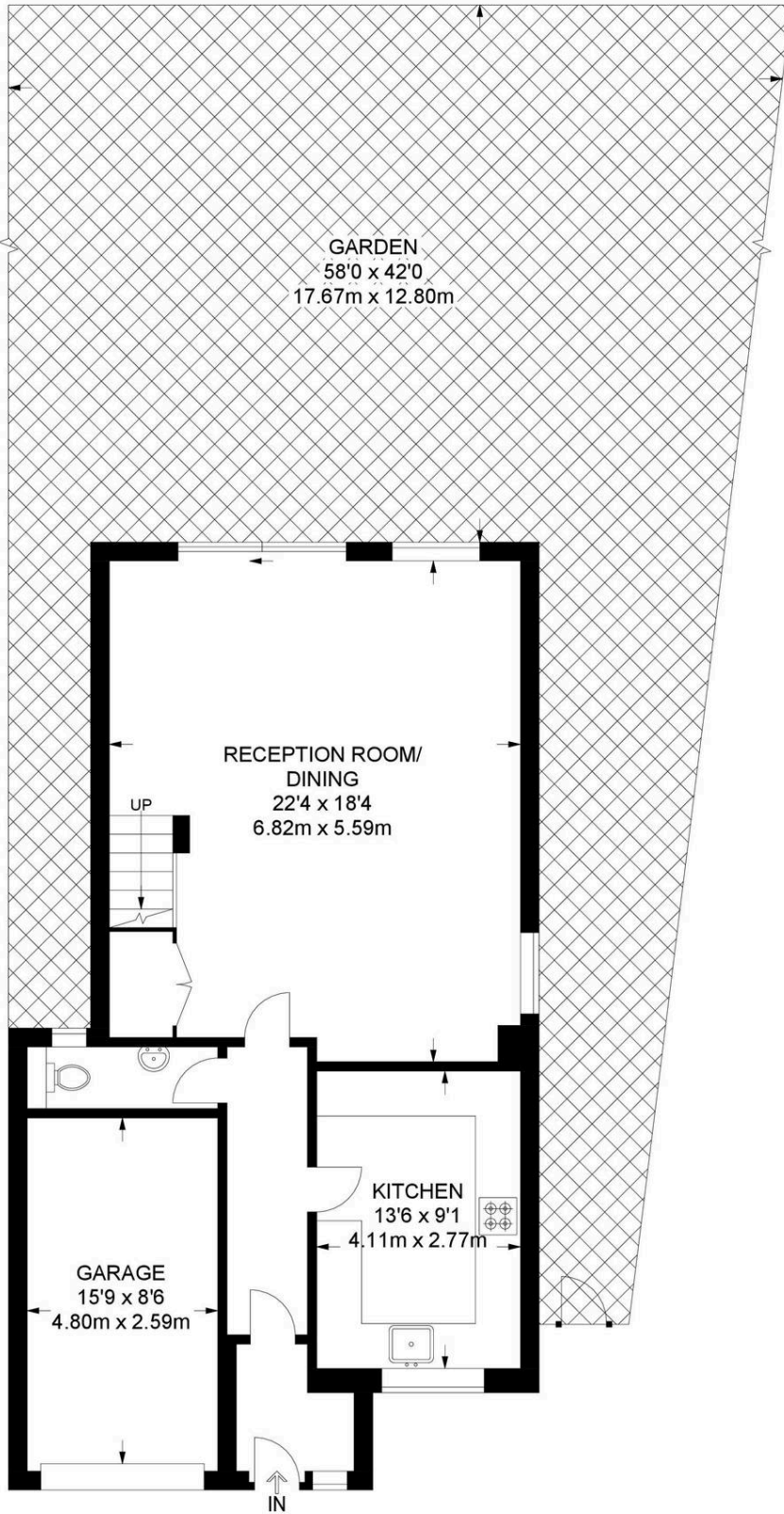


1c St. Margarets Avenue, Sidcup

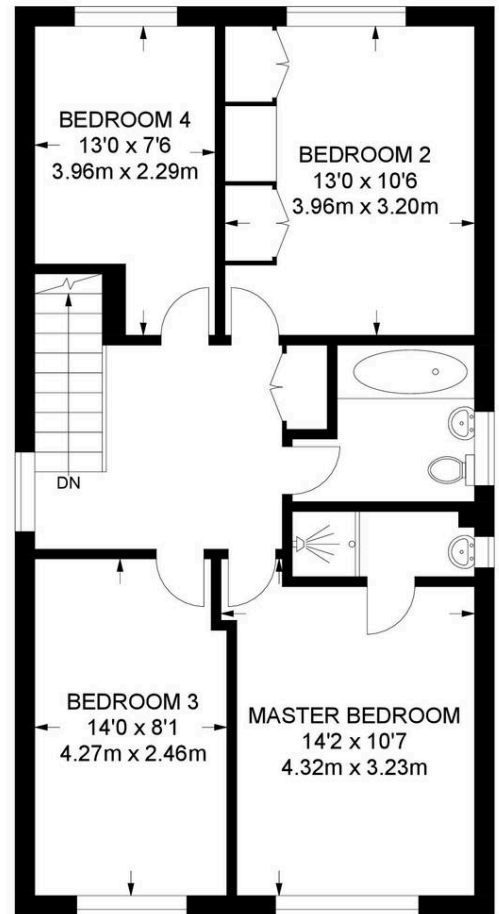
£675,000 Freehold

4 BEDROOM LINK DETACHED HOUSE • SPACIOUS LOUNGE DINER • LOW MAINTENANCE PRIVATE REAR GARDEN • GAS CENTRAL HEATING & DOUBLE GLAZING • OFF STREET PARKING & INTEGRAL GARAGE • SHORT WALK TO NEW ELTHAM STATION • ENSUITE SHOWER ROOM TO MASTER • EPC RATING C • BEXLEY COUNCIL TAX BAND F





GROUND FLOOR
782 SQ FT / 72.6 SQ M



FIRST FLOOR
678 SQ FT / 63 SQ M

APPROXIMATE GROSS INTERNAL AREA
1460 SQ FT / 135.6 SQ M

You can include any text here. The text can be modified upon generating your brochure.