



13 Wade Avenue, Orpington

£2,200 pcm Freehold

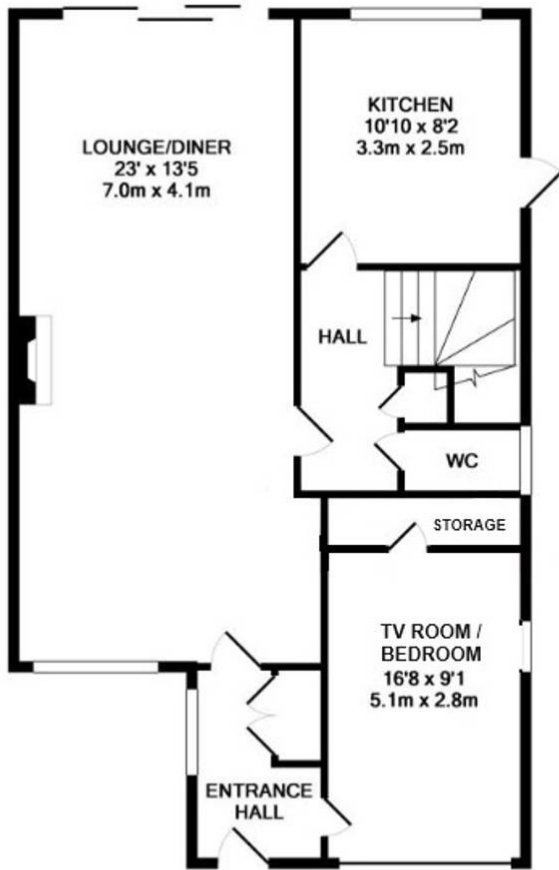
THREE DOUBLE BEDROOMS • RECEPTION • SEPARATE KITCHEN • TV ROOM/BEDROOM FOUR • FAMILY BATHROOM • NEW DRIVEWAY FOR TWO CARS • SECLUDED REAR GARDEN

No keys - Landlord currently living in the property - access via them but I will accompany.

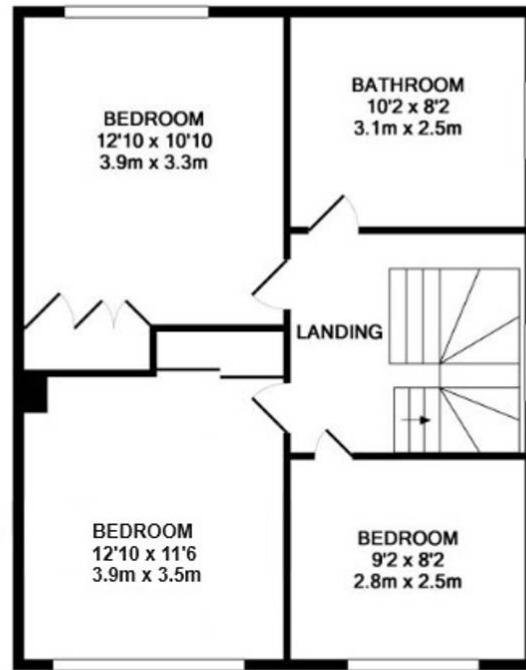
Holding Deposit - £507.69

Security Deposit - £2538.46





GROUND FLOOR



1ST FLOOR

Whilst every attempt has been made to ensure the accuracy of the floor plan contained here, measurements of doors, windows, rooms and any other items are approximate and no responsibility is taken for any error, omission, or mis-statement. This plan is for illustrative purposes only and should be used as such by any prospective purchaser. The services, systems and appliances shown have not been tested and no guarantee as to their operability or efficiency can be given.
 Made with Metropix ©2017

You can include any text here. The text can be modified upon generating your brochure.