

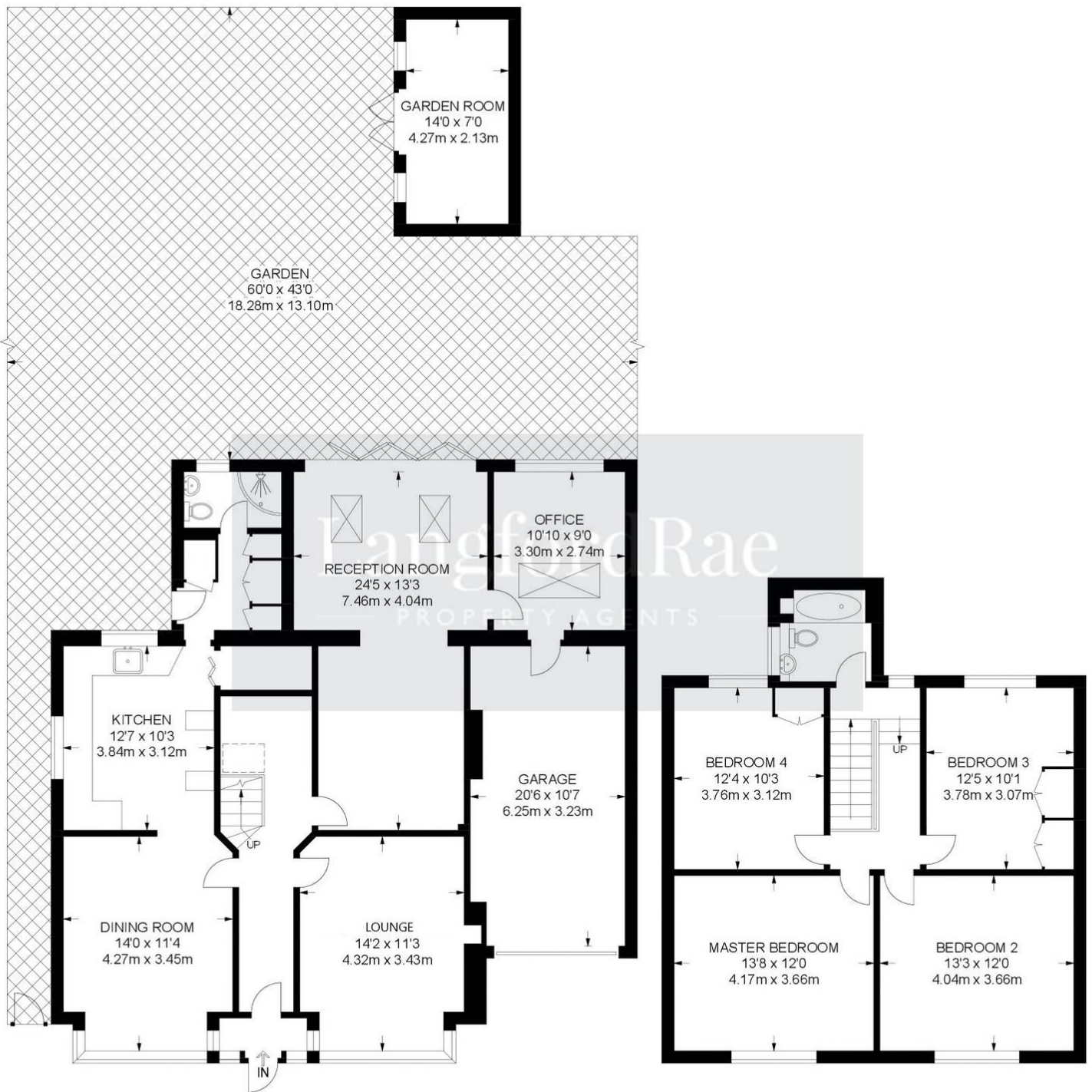


## Rusholme Lodge, 57 High Street

£1,000,000 Freehold

CHAIN FREE • GARAGE & DRIVEWAY • THREE RECEPTIONS • STUDY • TWO BATHROOMS • SECLUDED REAR GARDEN •  
GARDEN OFFICE • VILLAGE LOCATION • CLOSE TO MULTIPLE STATIONS • WALKING DISTANCE TO LOCAL SCHOOLS &  
BUS LINKS





**GROUND FLOOR**  
1332 SQ FT / 123.7 SQ M

**FIRST FLOOR**  
720 SQ FT / 66.9 SQ M

**APPROXIMATE GROSS INTERNAL AREA: 2052 SQ FT / 190.6 SQ M**  
**TOTAL AREA (INCLUDING OUTBUILDING): 2150 SQ FT / 199.7 SQ M**

You can include any text here. The text can be modified upon generating your brochure.