



1 Wolsey Mews, Orpington

£3,000 pcm

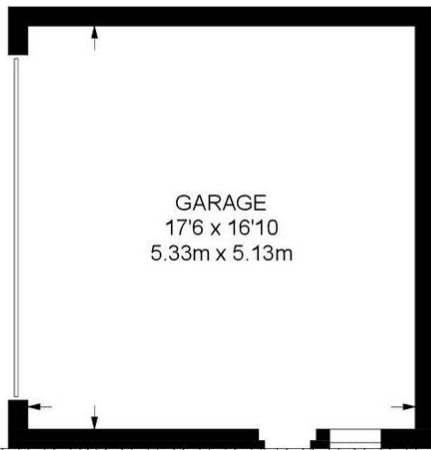
FOUR BEDROOM DETACHED HOUSE • CLOSE PROXIMETY TO MAINLINE STATIONS • DOUBLE GARAGE • FITTED KITCHEN •
ENSUITE SHOWER ROOM TO MASTER BEDROOM • PRIVATE LOW MAINTENANCE GARDEN

COUNCIL TAX: F – EPC RATING: C

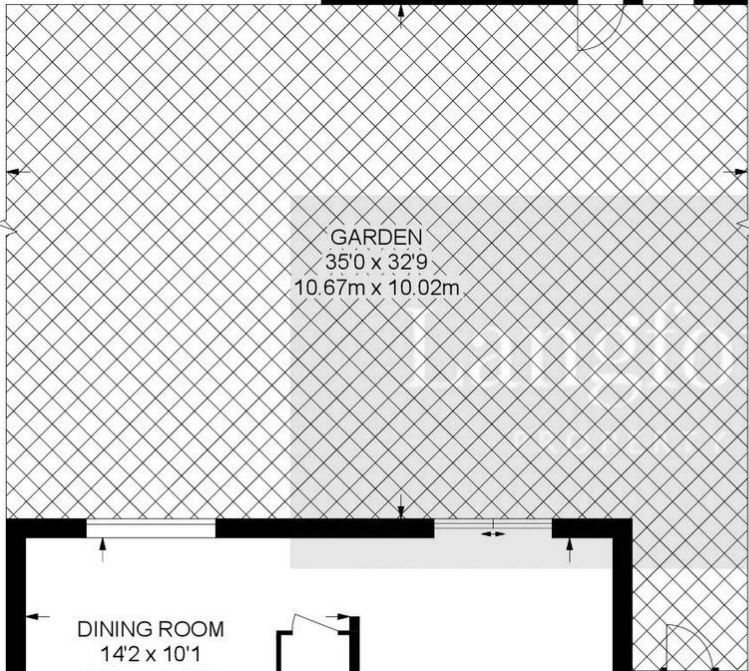
DEPOSIT – £3461.54

HOLDING FEE – £692.30

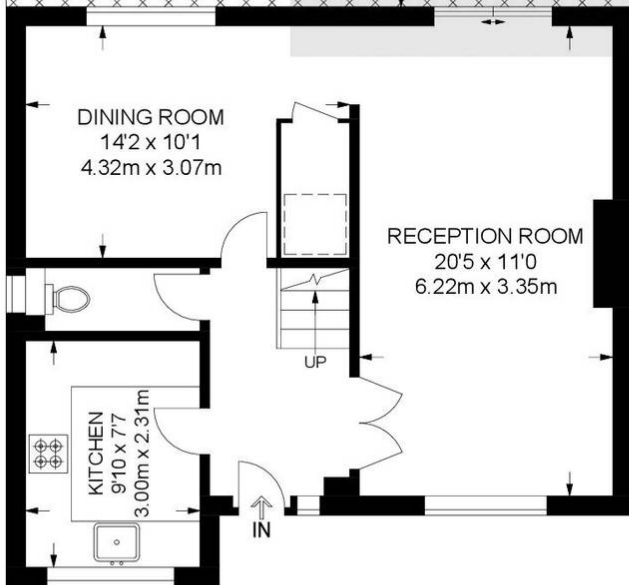




GARAGE
17'6 x 16'10
5.33m x 5.13m



GARDEN
35'0 x 32'9
10.67m x 10.02m

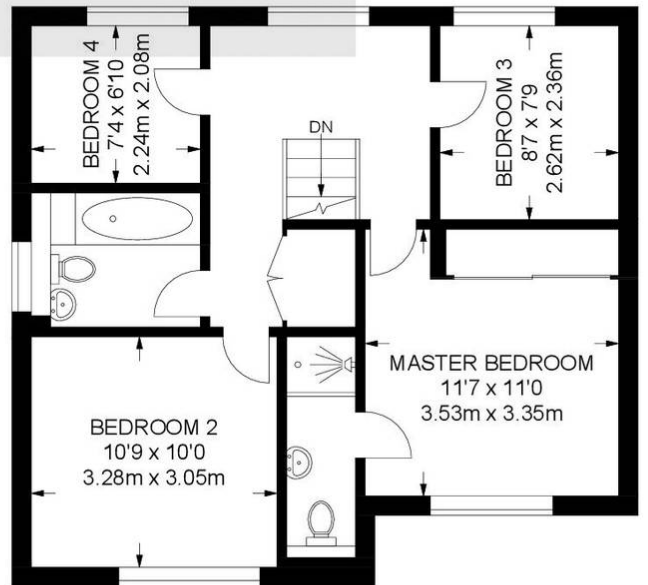


DINING ROOM
14'2 x 10'1
4.32m x 3.07m

RECEPTION ROOM
20'5 x 11'0
6.22m x 3.35m

KITCHEN
9'10 x 7'7
3.00m x 2.31m

GROUND FLOOR
544 SQ FT / 50.5 SQ M



BEDROOM 2
10'9 x 10'0
3.28m x 3.05m

MASTER BEDROOM
11'7 x 11'0
3.53m x 3.35m

BEDROOM 4
7'4 x 6'10
2.24m x 2.08m

BEDROOM 3
8'7 x 7'9
2.62m x 2.36m

FIRST FLOOR
564 SQ FT / 52.4 SQ M

APPROXIMATE GROSS INTERNAL AREA: 1108 SQ FT / 102.9 SQ M
TOTAL AREA (INCLUDING GARAGE): 1403 SQ FT / 130.3 SQ M

You can include any text here. The text can be modified upon generating your brochure.