



15 Downe Avenue, Cudham

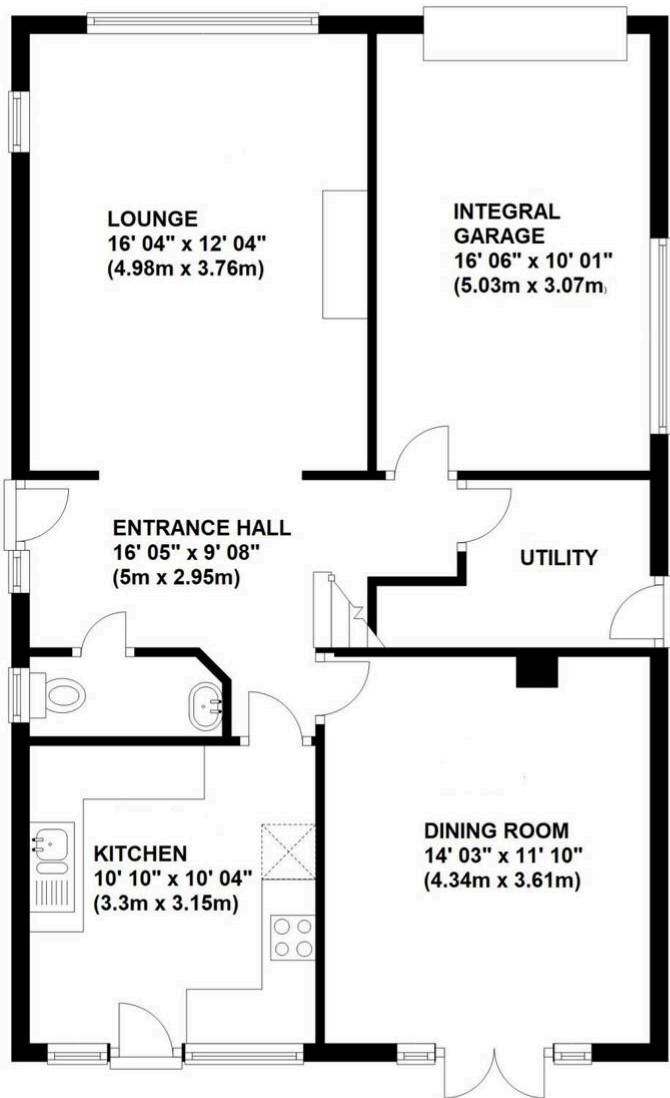
£575,000 Freehold

CHAIN FREE • SEMI RURAL LOCATION • CLOSE TO GREEN ST GREEN & ORPINGTON • FAMILY BATHROOM & CLOAKROOM
• UTILITY ROOM • SECLUDED REAR GARDEN • GARAGE & DRIVEWAY • DOUBLE GLAZING & GAS CENTRAL HEATING



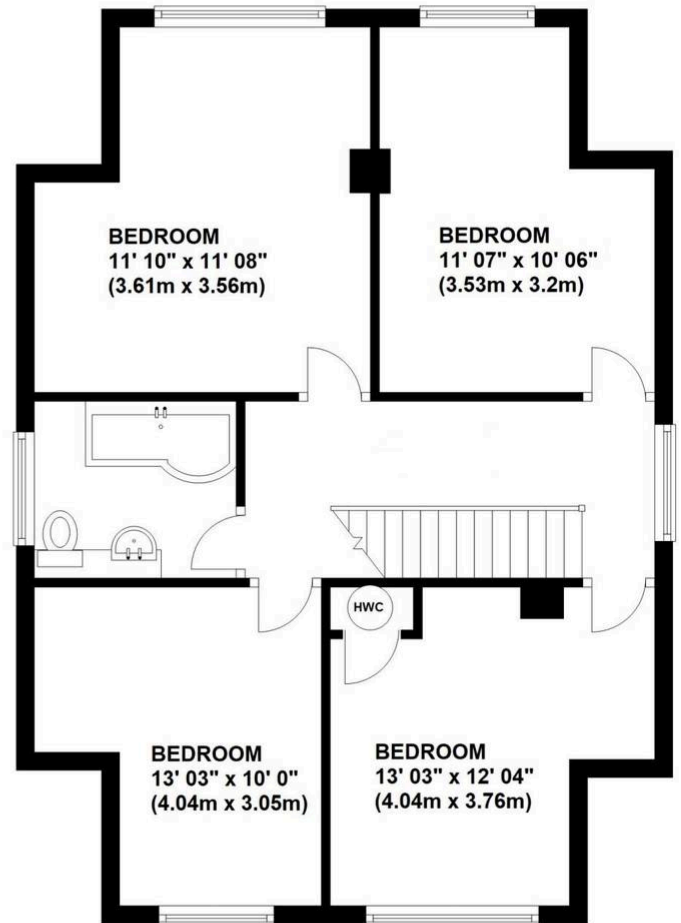
Ground Floor

Approx. 78.0 sq. metres (839.3 sq. feet)



First Floor

Approx. 61.3 sq. metres (659.4 sq. feet)



Total area: approx. 139.2 sq. metres (1498.7 sq. feet)

You can include any text here. The text can be modified upon generating your brochure.