



# 1 Norman Close, Orpington

£1,150,000 Freehold

WALKING DISTANCE TO DARRICK WOOD SCHOOLS • 24FT OPEN PLAN KITCHEN DINER • UTILITY & CLOAKROOM •  
ENSUITE TO MASTER • FAMILY BATHROOM • GROUND FLOOR GUEST BEDROOM • SECLUDED REAR GARDEN • PERGOLA  
& PIZZA OVEN • WORKSHOP/OUTBUILDING • CLOSE TO ORPINGTON STATION



# Norman Close, Orpington, BR6

Approximate Area = 1831 sq ft / 170.1 sq m

Outbuilding = 156 sq ft / 14.5 sq m

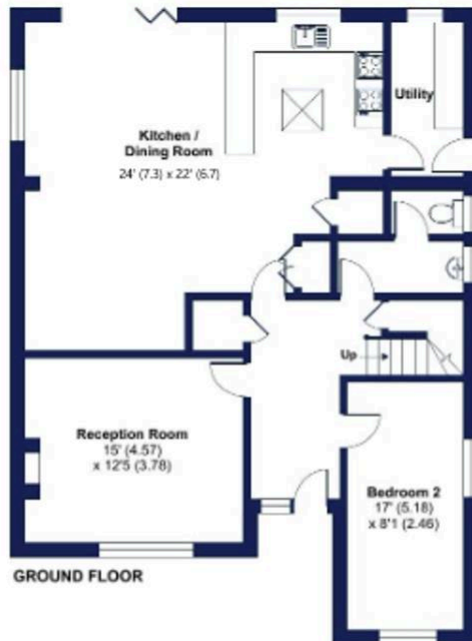
Total = 1987 sq ft / 184.6 sq m

For identification only - Not to scale

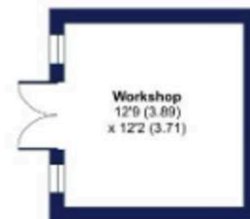


FIRST FLOOR

Garden  
Approximate  
58'6" (17.86)  
37'6" (11.43)



GROUND FLOOR



OUTBUILDING



Floor plan produced in accordance with RICS Property Measurement Standards incorporating the use of International Property Measurement Standards (IPMS2 Residential).

You can include any text here. The text can be modified upon generating your brochure.