

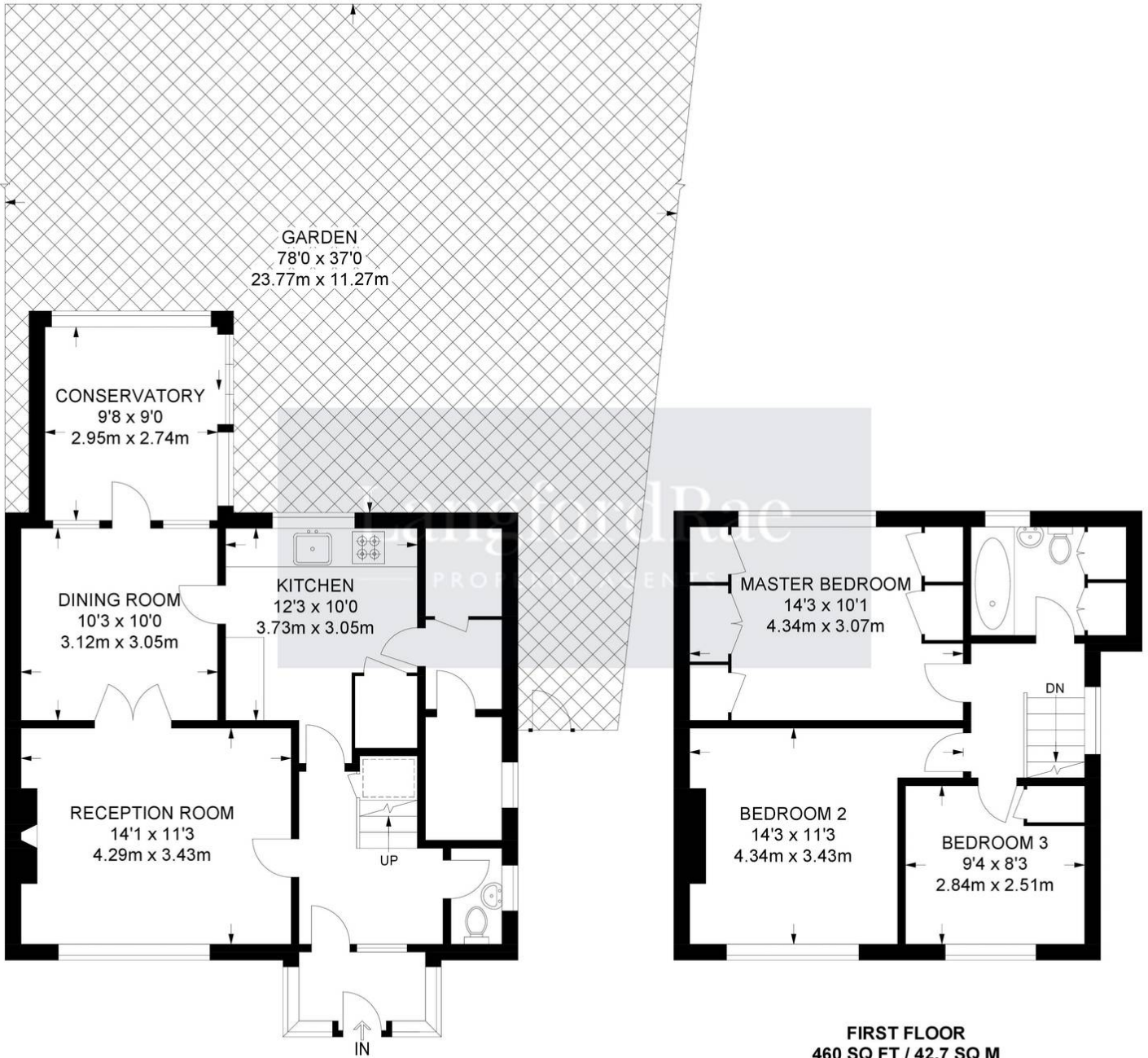


## 33 The Highway, Orpington

£575,000 Freehold

CHAIN FREE • LOUNGE & DINING ROOM • SEPARATE KITCHEN • DOUBLE GLAZING & GAS CENTRAL HEATING • FAMILY BATHROOM • CONSERVATORY • SECLUDED REAR GARDEN • WALKING DISTANCE TO LOCAL AMENITIES, SCHOOLS & SHOPS • WALKING DISTANCE TO CHELSFIELD STATION





**GROUND FLOOR**  
664 SQ FT / 61.7 SQ M

**FIRST FLOOR**  
460 SQ FT / 42.7 SQ M

**APPROXIMATE GROSS INTERNAL AREA**  
1124 SQ FT / 104.4 SQ M

You can include any text here. The text can be modified upon generating your brochure.