

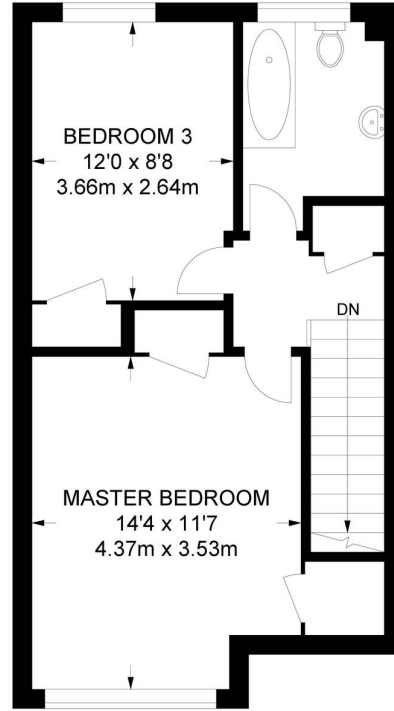


## 8 Linslade Road, Orpington

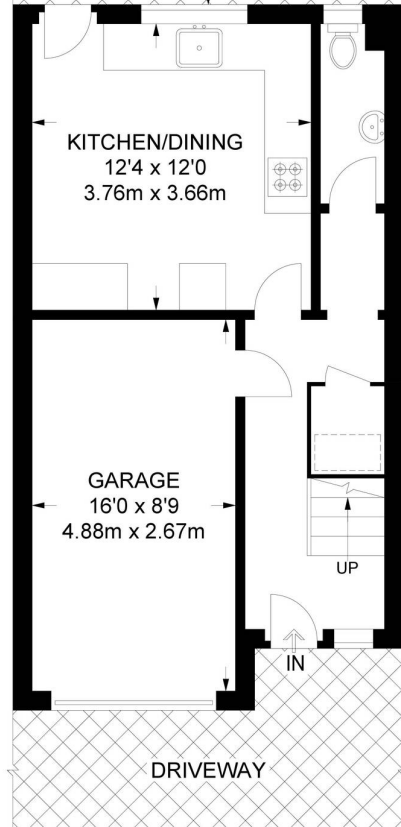
£525,000 Freehold

GARAGE & DRIVEWAY • SOUTH FACING GARDEN • 15FT RECEPTION • KITCHEN/DINER • FAMILY BATHROOM & CLOAKROOM • AMPLE STORAGE • GAS CENTRAL HEATING & DOUBLE GLAZING • WALKING DISTANCE TO CHELSFIELD STATION • WALKING DISTANCE TO LOCAL AMENITIES & SCHOOLS

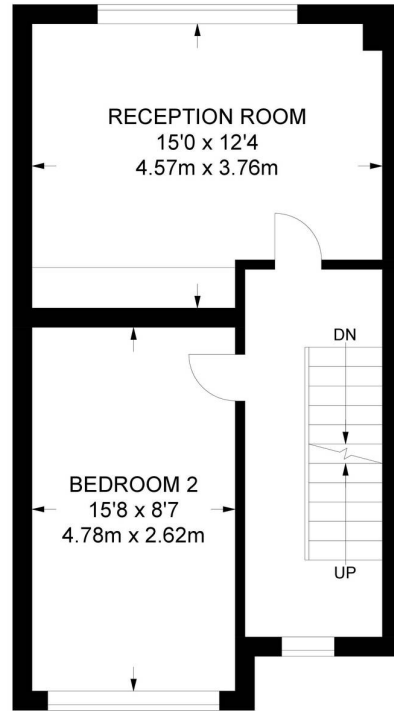




**SECOND FLOOR**  
420 SQ FT / 39 SQ M



**GROUND FLOOR**  
419 SQ FT / 38.9 SQ M



**FIRST FLOOR**  
419 SQ FT / 38.9 SQ M

**APPROXIMATE GROSS INTERNAL AREA**  
1258 SQ FT / 116.8 SQ M

You can include any text here. The text can be modified upon generating your brochure.