



120 Windsor Drive, Orpington

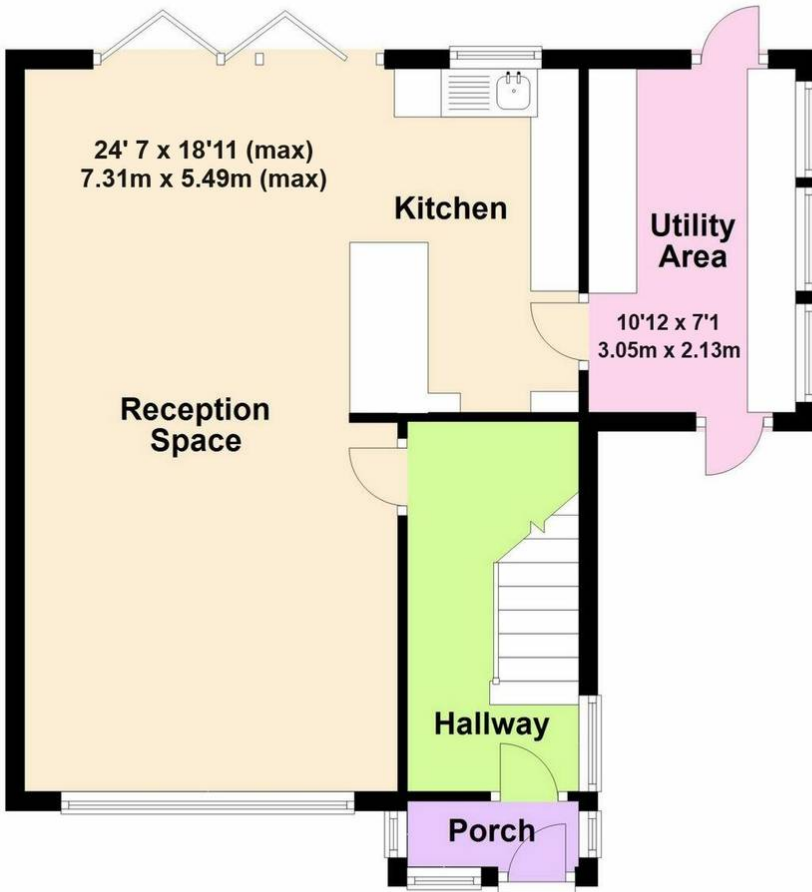
£575,000 Freehold

DRIVEWAY FOR THREE CARS • OPEN PLAN LIVING • UTILITY AREA • FAMILY BATHROOM • RECENTLY RENOVATED •
DOUBLE GLAZING & GAS CENTRAL HEATING • AMPLE STORAGE • 80FT REAR GARDEN • WALKING DISTANCE TO LOCAL
AMENITIES • WALKING DISTANCE TO CHELSFIELD STATION



Ground Floor

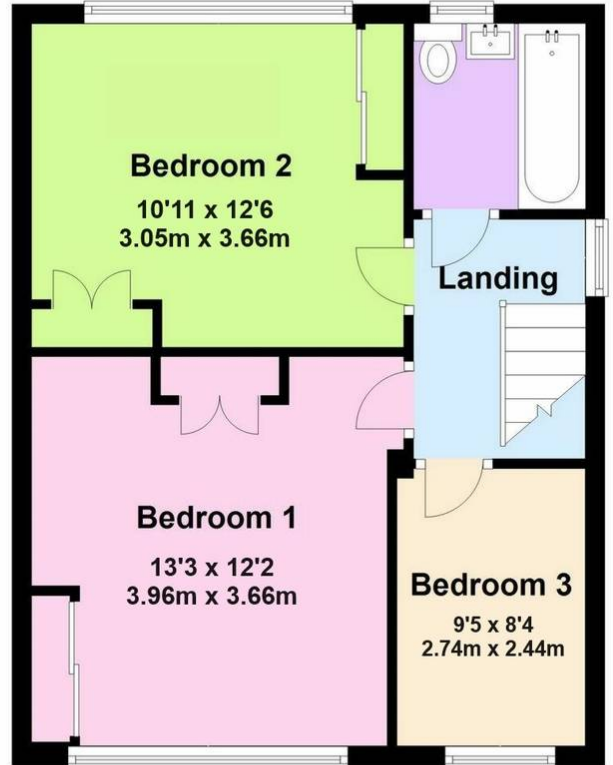
Approx. 52.1 sq. metres (561.1 sq. feet)



Total area: approx. 94.6 sq. metres (1018.3 sq. feet)

First Floor

Approx. 42.5 sq. metres (457.1 sq. feet)



Garden - 80' x 30'
24m x 9.14m

You can include any text here. The text can be modified upon generating your brochure.