

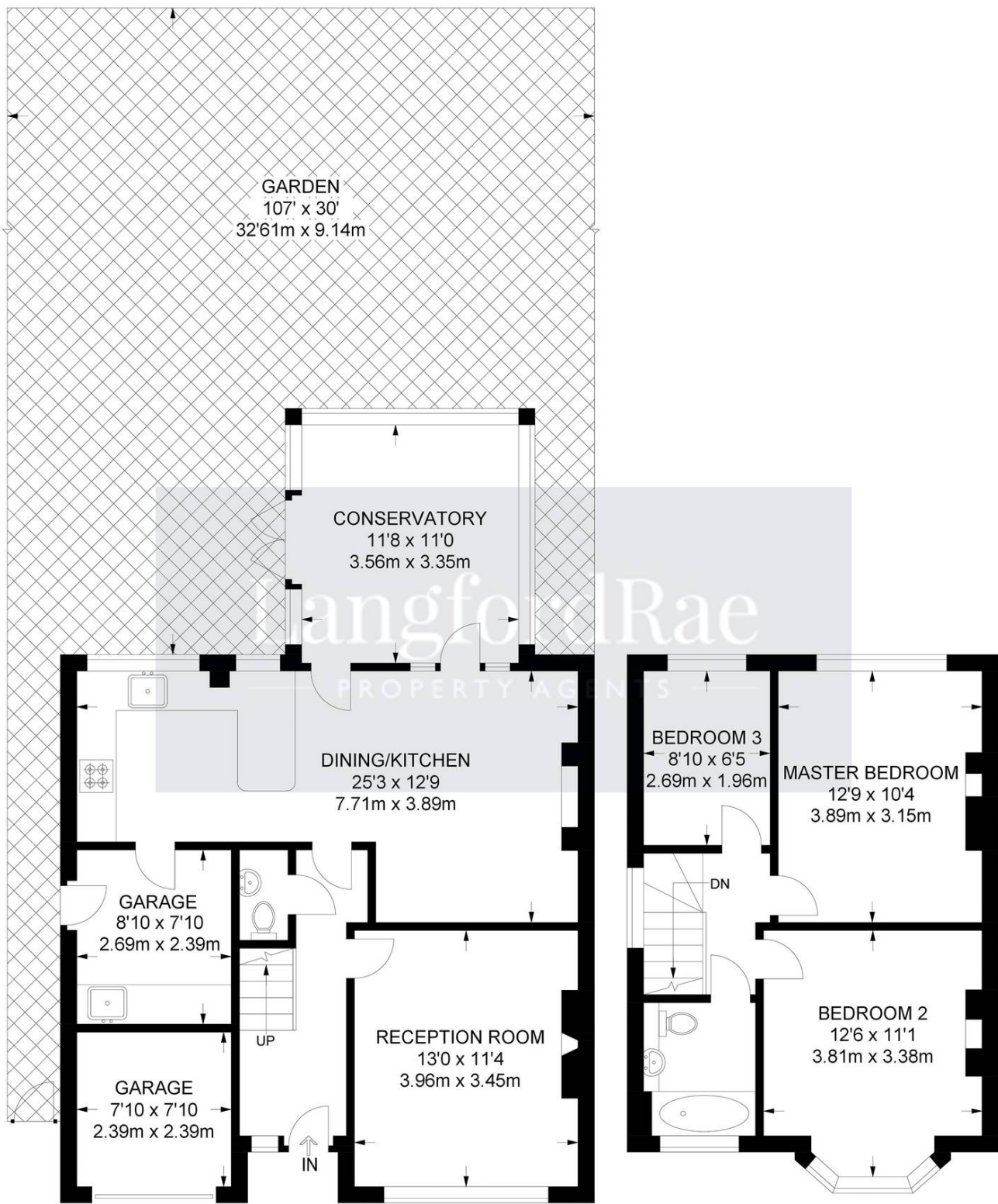


## 16 Cudham Lane North, Orpington

£650,000 Freehold

OPEN PLAN 25FT KITCHEN/DINER • UTILITY & CLOAKROOM • SEPARATE RECEPTION • FAMILY BATHROOM •  
CONSERVATORY • STORAGE GARAGE & DRIVEWAY • OUTBUILDING & LOG STORE • 107FT SECLUDED REAR GARDEN •  
CLOSE TO LOCAL AMENITIES, SCHOOLS AND STATIONS • BROMLEY COUNCIL TAX D AND EPC RATING D





**GROUND FLOOR**  
786 SQ FT / 73 SQ M

**FIRST FLOOR**  
416 SQ FT / 38.6 SQ M

**APPROXIMATE GROSS INTERNAL AREA**  
**1202 SQ FT / 111.6 SQ M**

You can include any text here. The text can be modified upon generating your brochure.